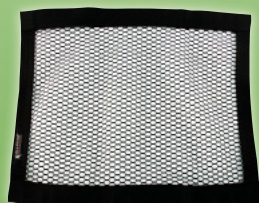


# MAY-JUNE

## 2011 SALE FLYER



Page 36



Mesh Window Net, Non-SFI  
**ALL10298**



Page 28



Wide 5 HS Wheels  
**STARTING AT**



Page 22



Tire Pressure Gauges  
**STARTING AT**



Page 26



GM XR-I Points  
Ignition Conversion Kit  
**CRN750-1710**



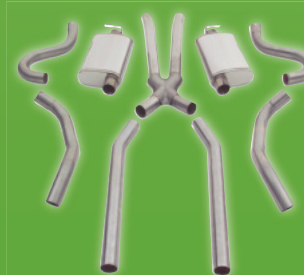
Page 6



Premium Lift Systems  
**STARTING AT**



Page 22



**SUPER SALE!**

**CAT-BACK SYSTEMS**



Page 25



Black Overflow Catch Can  
**JAZ600-025-01**



Page 15

26 Series Steel  
Monotube Shock  
Absorbers  
**YOUR CHOICE**



Page 36



Mud-X Concentrate  
**ALL78230**

# SALE FLYER

## New Brands Added To Our Product Lines

We are constantly adding new brands to our inventory selection. Listed below are the latest additions.



Torque converters



Performance exhaust systems, mufflers, and related components



Engine parts for nostalgic vehicles



Billet styling accessories



Performance brake systems



Performance cylinder heads and components

### Please Note:

- Some items not legal for sale or use in California on pollution controlled vehicles
- Some items may be special order
- Additional freight charges may apply
- Not responsible for typographical errors
- Prices are subject to change without notice

## MANUFACTURER INDEX

Boxes Highlighted In Red Denote New Manufacturers This Issue

Manufacturer	Page
Accel	33
Aeromotive	18
AFCO	23
AFM Performance	30
Air Flow Research	18
Air Lift	7
Allstar Performance	3-5,36
BD Diesel	10
Be Cool	8
California Car Duster	10
Callies	31
Comp Cams	32
Competition Engineering	29
Crane Cams	26
Crower	28
Design Engineering	19
Doug's Headers	18
Dura-Bond	30
Eagle Specialty Products	33
Eibach	12
Elgin	23
Fast Shafts	13,19

Manufacturer	Page
Fivestar	14,15
Flowtech	22
Four Seasons Radiators	13
Hedman Hedders	20
Hellwig	21
Hooker Headers	16
HVH	25
Jaz Products	25
KC HiLites	12
Kirkey	11
K&N	22
Lokar	9
Magnaflow	22
Mallory	31
Mickey Thompson	13
Mile Marker	12
Moroso	23
Motive Gear	6
Mr. Gasket	24
Performance Accessories	6
Poweraid	13
Proform	19

Manufacturer	Page
QA1	15
QuickCar Racing	16,22
Quick Fuel	29
Race Ready	19
Racing Head Service	27
Racing Power Company	6
Rancho	19
SCAT Crankshafts	34
TCI	17
Trick Flow	25
Trick Titanium	30
Triple X	8,34,35
Tuff Stuff	11
Vintage Air	8
Vortech	24
Waterman Racing	17
WEHRS Machine	17
Weld Racing	28
Wilson Manifolds	27
Wilwood	16
World Products	26



**Allstar**  
Pg. 3-5, 36

## Electric Exhaust Cut Out

Eliminate the need to manually uncap the exhaust. Bolt-on aluminum exhaust cut out is 3" in diameter and bolts to most adapter flanges. Sold each. Wiring harness sold separately.



ALL34232

Part No.	Description	Price
ALL34230	Electric Exhaust Cut Out	
ALL34232	Single System Harness	
ALL34233	Dual System Harness	

## Nitrogen Bottle Holder ALL12210

Attach to trailer or shop wall to secure 9-1/4" diameter nitrogen bottle in upright position. Heavy steel bracket has a 1.5" wide hinged strap that pivots for easy bottle replacements. Overall bracket length is 17.5" with mounting holes 16" on center. Set of two.



## Thin OD Jam Nuts Black Aluminum

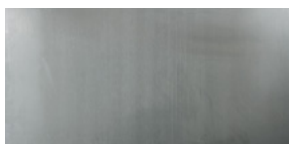
Specialty jam nuts have smaller outside diameters allowing smaller wrenches to be used when changing radius rod lengths.



Part No.	Description	Price
ALL18286	5/8"-18 RH	
ALL18287	5/8"-18 LH	
ALL18288	3/4"-16 RH	
ALL18289	3/4"-16 LH	
ALL18286-10	5/8"-18 RH, 10-Pack	
ALL18287-10	5/8"-18 LH, 10-Pack	
ALL18288-10	3/4"-16 RH, 10-Pack	
ALL18289-10	3/4"-16 LH, 10-Pack	

## Aluminum Panels

Universal, 24" x 48" panels have many uses around the shop or at the track. Panels work well when fabricating spoiler sides, interior panels or on uneven pit areas as a floor jack plate.



Part No.	Description	Price
ALL22236	24" x 48" Panel, .063" Thick	
ALL22238	24" x 48" Panel, .125" Thick	

## Sheet Steel

24 gauge steel is perfect for repairing stock interiors, firewalls, or other body panels.



Part No.	Description	Price
ALL22242	4' x 8', Plain	
ALL22243	4' x 10', White	

## 9" Non Floater Housing Kit For GM Intermediate Metric Chassis

Housing kit fits the 1978-88 GM intermediate chassis. Replace a stock GM 7.5" rear-end with the much stronger Ford 9" style. Kit includes a select used center section, new axle tubes with large bearing late Ford/Torino style-ends, 31-spline axles with bearings and seals installed, drilled for 1/2"-20 studs with 5 on 4-1/2" or 5 on 4-3/4" bolt circles. Choose from two widths, 58" and 60" axle flange to axle flange.



Part No.	Description	Price
ALL68756	Ford 9" Housing Kit 58" Without Mounts	
ALL68757	Ford 9" Housing Kit 60" Without Mount	
ALL99170	32" Replacement Axle, Cut To Fit	
ALL99171	29" Replacement Axle, Cut To Fit	

**NOTE:** Housings do not have trailing arm brackets or coil spring perches.

## GM Metric Chassis Trailing Arm Bracket Kits Your Choice -

Includes rear upper and lower control arm mounts. Upper mount must be cut to desired height depending upon where housing is located in the chassis.



ALL60052

Part No.	Description
ALL60052	Single Hole Lower In Stock Location
ALL60053	Single Hole Lower, Lowered To Increase Traction
ALL60054	Multi Hole Lower

## GM Axle C-Clips

Replacement C-clips for popular GM axles.



Part No.	Description	Price
ALL66120	7.5", Pair	
ALL66121	8.5", Pair	
ALL66122	7.5", Genuine GM Part, Each	
ALL66123	8.5", Genuine GM Part, Each	

# New Products!



Allstar  
Pg. 3-5, 36

## Unwelded Ball Joint Holder Kit ALL56298

Kit allows components to be welded at any angle. Stud is 5/8"-18RH thread and bracket has a 3/8" hole. Holder accepts ALL56214 style screw-in upper ball joint.



## 5x5 Hub Kits

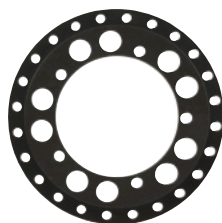
Kits are available in aluminum or steel and are complete, less rotor ring. Rotor Ring is sold separately to allow changing of rotor combinations without having to purchase a complete new hub assembly.



Part No.	Description	Price
ALL68764	Aluminum Front	
ALL68765	Aluminum Rear	
ALL68766	Steel Front	
ALL68767	Steel Rear	

## Rotor Rings

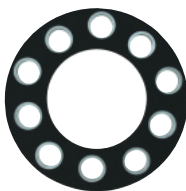
8-Bolt rotor rings work with Allstar hubs and allow rotor combinations to be changed without having to purchase a completely new hub assembly.



Part No.	Description	Price
ALL68810	Aluminum Ring (Most Common)	
ALL68811	Steel Ring (IMCA Legal)	
ALL68812	Aluminum Ring Self Centering (Must Use T-Nuts)	
ALL68813	T-Nut Kit For ALL68812 8-Bolt Ring	

## Plastic Wheel Spacers

Reduce unsprung weight by up to 80%! Structural composite spacers have been tested and can withstand high heat and high side forces in asphalt use. Must be torqued for proper break-in. Sold each.



Part No.	Description	Price
ALL44202	5x5 And 5x4-3/4", 1/4" Thick	
ALL44204	5x5 And 5x4-3/4", 1/2" Thick	
ALL44206	Wide 5, 1/4" Thick	
ALL44208	Wide 5, 1/2" Thick	

## Bump Steer Kit

Kit includes a 5/8"-18 x 3" bolt and 4 spacers (.100", .200", .300" and .500").



Part No.	Description	Price
ALL18600	Bump Steer Kit	
ALL18602	.030" Bump Steer Spacers, 2-Pack	
ALL18603	.060" Bump Steer Spacers, 2-Pack	
ALL18604	.100" Bump Steer Spacers, 2-Pack	
ALL18605	.200" Bump Steer Spacers, 2-Pack	
ALL18606	.300" Bump Steer Spacers, 2-Pack	
ALL18607	.400" Bump Steer Spacers, 2-Pack	
ALL18608	.500" Bump Steer Spacers, 2-Pack	

## Tie Rod Spacer ALL56288

Spacer corrects bump steer on vehicles that use a rod end as an outer tie rod. Spacer is used between the spindle arm and the rod end. Steel spacer is 2" tall and has a 5/8" hole.



## Temperature Gauge Adapters

Aluminum adapters are a nice upgrade from brass adapters.



Part No.	Description	Price
ALL50203	3/8"NPT	
ALL50204	1/2"NPT	

## D.O.T. Legal Brake Hose Kits

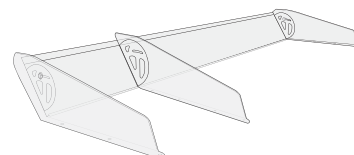
Kits include two 16" stainless braided lines with banjo fittings attached, banjo bolts, crush washers, frame adapter fittings, frame tabs and holding clips.



Part No.	Description	Price
ALL42032	GM Metric Kit With 10mm-1.50 Bolts	
ALL42033	Big GM Kit With 7/16"-20 Bolts	

## 8" Clear Adjustable Rear Spoiler ALL23005

Clear spoiler has a breakaway right side which allows more spoiler to remain on car in the event of right side damage, creating more down force on right rear of the car. Kit includes two-piece main body, three mounting supports and two hinges. 8" tall x 72" wide.







Allstar  
Pg. 3-5, 36

## Coiled Tubing

Coiled tubing works great for building one piece custom fuel lines without unions. Stainless steel tubing is 304 grade and double annealed for easy flaring and bending. Standard zinc tubing is also available. Tubing does not include flare nuts (sold separately).



Part No.	Description	Price
ALL48327	5/16" Standard Zinc, 25'	
ALL48320	5/16" Stainless, 20'	
ALL48328	3/8" Standard Zinc, 25'	
ALL48322	3/8" Stainless, 20'	

## Inverted Flare Nuts

Flare nuts are used for building custom length fuel lines. Choose from zinc plated or stainless.



Part No.	Description	Price
ALL50140	1/2"-20 Standard Zinc For 5/16" Line, 10-Pack	
ALL50141	1/2"-20 Stainless For 5/16" Line, 4-Pack	
ALL50142	5/8"-18 Standard Zinc For 3/8" Line, 10-Pack	
ALL50143	5/8"-18 Stainless For 3/8" Line, 4-Pack	

## Mastersbilt Mid-Plate

### ALL38135

Aluminum mid-plate for Mastersbilt chassis is 1/4" thick, black powder coated and profiled to keep weight at a minimum without compromising strength or durability. 3.5 Lbs.



## Two Lever Shifter With Lock

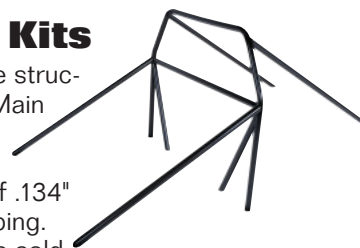
### ALL54126

Black anodized shifter has a built-in lock which holds the transmission in gear when track conditions are rough. Shifter includes two 22" heavy duty 3/8" shifter rods and mounting hardware. Taller high range locking handle and shorter reverse handle provide easy identification and operation.



## 8-Point Roll Bar Kits

Kits increase safety and the structural integrity of the vehicle. Main hoops are custom bent to fit each application precisely. Hoop and bars constructed of .134" mild steel, 1-3/4" diameter tubing. Welding required. Floor plates sold separately for unibody cars.



Part No.	Description	Price
ALL22600	Camaro/Firebird, 1967-69	
ALL22601	Camaro/Firebird, 1970-81	
ALL22604	Camaro, 2010-11	
ALL22608	GM "G"-Body Malibu/Cutlass/Regal/Grand Prix, 1978-88	
ALL22610	Mustang/Capri, 1979-83	
ALL22640	Floor Plates 6" x 6" (For Unibodies) 6-Pack	

## Adjustable Throttle Brackets With Return Springs

Billet aluminum throttle bracket assemblies, designed for use with popular Holley 4150 style carburetors, securely mount and hold throttle cable in place. Specially designed return spring mount attaches to the carb for simple installation and smooth operation. Brackets are offered for use with GM, Lokar, Morse or Ford style throttle cables in silver or black anodized finishes.



Part No.	Description	Price
ALL54210	4150 GM Style, Silver	
ALL54211	4150 GM Style, Black	
ALL54214	4150 Lokar Style, Silver	
ALL54215	4150 Lokar Style, Black	
ALL54218	4150 Morse Style, Silver	
ALL54219	4150 Morse Style, Black	
ALL54222	4150 Ford Style, Silver	
ALL54223	4150 Ford Style, Black	



# New Products!



Full Spool



Mini Spool



## Full Spools And Mini Spools

Popular with dirt track racers, drag racers and off-road competitors, spools are an economical and effective alternative to locking differentials as a traction and performance enhancement. Motive Gear spools are manufactured from durable 4140 forged steel that has been fully heat treated and CNC-machined, resulting in decreased deflection and increased gear life. Spools are offered for a wide variety of applications in standard and lightweight versions.

Part No.	Description	Price
<b>Full Spools</b>		
MOTFS10-28	GM 8.5" 10-Bolt, 28-Spline	
MOTFS10-30	GM 8.5" 10-Bolt, 30-Spline	
MOTFS12-30	GM 8.875" 12-Bolt, 30-Spline	
MOTFS8.75-30	Chrysler 8.75", 30-Spline	
MOTFS8.8-31	Ford 8.8", 31-Spline	
MOTFS9-28	Ford 9", 28-Spline	
MOTFS9-28LW	Ford 9", 28-Spline, Lightweight	
MOTFS9-31	Ford 9", 31-Spline	
MOTFS9-31LW	Ford 9", 31-Spline, Lightweight	
MOTFS9-35	Ford 9", 35-Spline	
<b>Mini Spools</b>		
MOTMS10-28	GM 8.5" 10-Bolt, 28-Spline	
MOTMS10C-28	GM 8.2" 10-Bolt, 28-Spline	
MOTMS12C	GM 8.875" 12-Bolt, 30-Spline	
MOTMS7.5-26	GM 7.5" 10-Bolt, 26-Spline	
MOTMS7.5-28	GM 7.5" 10-Bolt, 28-Spline	
MOTMS88-28	Ford 8.8", 28-Spline	
MOTMS88-31	Ford 8.8", 31-Spline	
MOTMS9-28	Ford 9", 28-Spline, Lightweight	
MOTMS9-31	Ford 9", 31-Spline, Lightweight	

## Spool Bearing Kits

Motive Gear now offers a full selection of Spool Bearing Kits. Ideal when replacing a spool or ring and pinion. Kits include Timken carrier bearings.



Part No.	Description	Price
MOTCK88	Ford 8.8"	
MOTCK9-289	Ford 9", 2.891" Carrier	
MOTCK9-306	Ford 9", 3.06" Carrier	
MOTCK9-325	Ford 9", 3.25" Carrier	
MOTCK10	GM 8.5" 10-Bolt, 1970-98	
MOTCK12C	GM 8.875" 12-Bolt, Car	
MOTCK875	Chrysler 8.75"	



## Replacement Headlight With Bulb

Multi-Reflex style headlight include H4 bulb.



RPCR7403

Part No.	Description	Price
RPCR7402	5-3/4" Dia. Clear	
RPCR7403	5-3/4" Dia. Tri-Bar With Blue Dot	
RPCR7404	7" Dia. Clear	
RPCR7405	7" Dia. Tri-Bar With Blue Dot	

## Replacement Headlight With Amber Turn Signal Bulb

Multi-Reflex style headlight include H4 bulb.



RPCR7406

Part No.	Description	Price
RPCR7400	5-3/4" Dia. Clear	
RPCR7401	5-3/4" Dia. Tri-Bar With Blue Dot	
RPCR7406	7" Dia. Clear	
RPCR7408	7" Dia. Tri-Bar With Blue Dot	



## Premium Lift Systems

The most economical method to raise vehicle 4"-6". Performance Accessories lift systems deliver premium quality and appearance without the premium price tag. Kit contains body lift, leveling kit and gap guards.

Part No.	Description	Max. Tire Size	Lift	Price
PRFPLS109	2007-10 Chevy/GMC 1500 P/U Gas	33"	5"	
PRFPLS600	2009-10 Dodge Ram 1500 4WD Gas	35"	5"	
PRFPLS604	2004-06 Dodge 2500/3500 4WD Diesel	35"	5"	
PRFPLS607	2006-08 Dodge Ram 1500 2 & 4WD Gas	35"	5"	
PRFPLS609	2007-09 Dodge 2500/3500 4WD Diesel	35"	5"	
PRFPLS708	2006-08 Ford F150 2 & 4WD w/o Flare Side Gas	33"	5.5"	
PRFPLS709	2009-10 Ford F150 4WD w/ Hitch Bumper & 5.4L Only	35"	5"	



## WirelessONE On-Board Air Control System AIR25870

Advanced on-board air control system features the WirelessOne key fob, a single path controller that provides equal inflation of both air springs. Includes three memory settings for frequent users and a low pressure sensor automatically activates the compressor if air spring pressure falls below a safe level. An integrated manifold and wiring harness allow an easy installation. Includes standard duty air compressor (AIR16060). Covered by a 2-year warranty.



## LoadCONTROLLER SINGLE On-Board Air Control Systems

Single path control, on-board air control systems assure equal inflation of both air springs. Low pressure sensor automatically activates the air compressor if air spring pressure falls below a safe level. Choice of standard or heavy duty compressors. Covered by a 2-year warranty.



Part No.	Description	Price
AIR25850	Standard Duty On-Board Air Control System	
AIR25854	Heavy Duty On-Board Air Control System	

## LoadCONTROLLER DUAL On-Board Air Control Systems

Dual path, on-board control systems independently inflate both air springs on a single gauge. A low pressure sensor automatically activates the air compressor if air spring pressure falls below a safe level. Choice of standard (AIR16060) or heavy duty (AIR16092) compressors. Covered by a 2-year warranty.



Part No.	Description	Price
AIR25852	Standard Duty On-Board Air Control System	
AIR25856	Heavy Duty On-Board Air Control System	

## LifeSTYLE Air Suspension For 2005-11 Ford Mustang

Upgrade 2005-11 Ford Mustangs to Air Lift's LifeSTYLE air suspension. Systems allow over 4" of vehicle drop and maintain over 4" of suspension travel with up to 3° of negative caster for exceptional handling, performance and reliability. Installs in a few hours, requires no special tools, and includes hardware. Front and rear suspension kits may be purchased separately, or complete in combo kit form with front and rear suspension kit, and choice of AutoPilot Digital or 4-Way Manual Air Management System.



Part No.	Description	Price
<b>Lifestyle Suspension Kits</b>		
AIR75579	Front Kit	
AIR75679	Rear Kit	
<b>Lifestyle Combo Kits</b>		
AIR77779	4-Way Manual Kit, Includes AIR75579, AIR75679 and AIR27666	
AIR95779	AutoPilot Digital Kit, Includes AIR75579, AIR75679 and AIR27667	

## AutoPilot Digital Air Management System AIR27667

Engineered for use with Lifestyle air suspension, AutoPilot Digital Air Management System monitors and controls ride height, inflates and deflates with one touch. Kit includes key activated ride height, built-in digital volt meter, auto leak detection and independent wheel control. Air tank, compressor, 1/4" air line and installation hardware are included.



## 4-Way Manual Air Management System AIR27666

Manual air management system accurately controls all four wheels. System features a VIAIR 16380 compressor and provides a maximum pressure of 175 PSI. Air tank, compressor, 1/4" air line and installation hardware are included.





# New Products!



## OE Series Radiators

OE Series Radiators combine the benefits of a modern, aluminum core design with the correct-appearing look of OEM copper/brass units. Radiators perform just like a traditional Be-Cool aluminum units, yet retain an OEM appearance including fully ribbed tanks. Units feature an OE black finish and are sold complete with new factory radiator caps and rubber mounting saddles or grommets where applicable. Choose from applications for standard or automatic transmissions. All units listed feature a crossflow design, unless specified.



Application	Standard Trans.		Automatic Trans.	
	Part No.	Price	Part No.	Price
1955-57 Chevrolet V-8, Downflow	BEC15002		BEC17002	
1968-72 GM "A" Body (Chevelle/Skylark/Cutlass/Lemans)	BEC15008		BEC17008	
1967-69 Chevrolet Camaro, SB V-8 (Correct For Z/28)	BEC15009		BEC17009	
1966-68 Chevrolet Corvette, BB & '68 SB With A/C	BEC15022		BEC17022	
1969-72 Chevrolet Corvette, SB With A/C	BEC15025		BEC17025	
1969-72 Chevrolet Corvette, BB	BEC15029		BEC17029	
1967-69 Chevrolet Camaro, BB	BEC15168		BEC17168	



Triple X  
Pg. 8,35,36

## Sprint Fiberglass Dual Duct Inside The Rail Hood



Constructed from gel-coated fiberglass, dual duct hood includes two outer inlets that allows the engine to breathe cool, clean air evenly into the injectors, while middle and side vents remove warm air from behind the radiator, preventing it from slipping into the engine. Choose from white or black gel-coated.

Part No.	Description	Price
TXRSCBW6837	Fiberglass Hood, White	
TXRSCBW6837BLK	Fiberglass Hood, Black	

## Sprint Fiberglass Nose

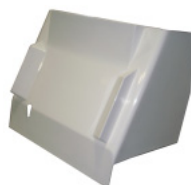
Durable, gel-coated fiberglass nose is designed for use with the Triple X Dual Duct Inside The Rail Hood. Choose from white or black gel-coated.



Part No.	Description	Price
TXRSCBW6119	Fiberglass Nose, White	
TXRSCBW6119BLK	Fiberglass Nose, Black	

## Sprint Fiberglass Dash

Designed for use with the Triple X Dual Duct Inside The Rail Hood. Choose from white or black gel-coated.



Part No.	Description	Price
TXRSCBW6447	Fiberglass Dash, White	
TXRSCBW6447BLK	Fiberglass Dash, Black	



## Gen IV SureFit System For 1967-68 Camaro VIN561167



Engineered specifically for 1967-68 Camaro non-factory air cars, the Gen IV SureFit is a modern, direct-fit climate control system with fly-by-wire electronic servo motor controls to eliminate cables and capillary tubing, while easing installation. Unit incorporates "just right temperature" blending, infinite blower fan speed control adjustment and a high capacity dehumidified defrost mode volume. Separate high capacity aluminum plate and fin cooling coil and the copper/brass Cuprobrazed parallel flow heater coil combine to deliver exceptional cooling or heating. Unit mounts neatly behind dash and includes evaporator, condenser, drier, compressor, compressor bracket, hose kit and hi/lo safety switch.



Complete line of A/C fittings, bulkheads and hose. Call for special prices!







Midnight Series



LOKXED-5001



LOKXKD-2350HT



LOKXSRK-4000

## Midnight Series Components

Lokar expands its Midnight Series product line of throttle cables, kickdown cables, and engine and transmission dipstick tube assemblies with black stainless steel housings and black aluminum fittings. Great for that all black look.

Part No.	Description	Price
<b>Throttle Cables</b>		
LOKXTC-1000HT	Black 24" Hi-Tech Throttle Cable	
LOKXTC-1000HT36	Black 36" Hi-Tech Throttle Cable	
LOKXTC-1000TP	Black 24" Tuned-Port Hi-Tech Throttle Cable	
LOKXTC-1000BLD	Black 24" Hi-Tech Throttle Cable Blower Drive	
LOKXTC-1000LS1	Black 36" Hi-Tech LS1 Throttle Cable	
<b>Kickdown Kits</b>		
LOKXKD-2350HT	Black Hi-Tech GM TH-350 Kickdown Kit	
LOKXKD-2400HT	Black Hi-Tech GM TH-400 Electric Kickdown Kit	
LOKXKD-2700HT	Black Hi-Tech GM 700-R4 Kickdown Kit	
LOKXKD-2700TP	Black Hi-Tech Tuned-Port GM 700-R4 Kickdown Kit	
LOKXKD-2200RHT	Black Hi-Tech GM 200-4R Kickdown Kit, Fits 1979-89	
LOKXKD-20C4HT	Black Hi-Tech Ford C-4 Kickdown Kit	
LOKXKD-20C6HT	Black Hi-Tech Ford C-6 Kickdown Kit	
LOKXKD-2AODHT	Black Hi-Tech Ford AOD Kickdown Kit	
LOKXKD-2727HT	Black Hi-Tech Chrysler 727 Kickdown Kit	
LOKXKD-2904HT	Black Hi-Tech Chrysler 904 Kickdown Kit	
<b>Carburetor Brackets/Springs</b>		
LOKXSRK-4000	Black Stainless Steel Carburetor Bracket And Black Stainless Springs	
LOKXSRK-4001	Black Stainless Steel Carburetor Bracket	
LOKXSRK-4002	Black Stainless Steel Springs	
<b>Transmission Dipstick Assemblies</b>		
LOKXTD-3350400FM	Black Hi-Tech Trans Dipstick GM-350/400 Firewall Mount	
LOKXTD-30PGFM	Black Hi-Tech Trans Dipstick GM Powerglide Firewall Mount	
LOKXTD-3700FM	Black Hi-Tech Trans Dipstick GM 700-R4 Firewall Mount	
LOKXTD-34L60EFM	Black Hi-Tech Trans Dipstick GM 4L60E Firewall Mount	
LOKXTD-34L80FM	Black Hi-Tech Trans Dipstick GM 4L80E Firewall Mount	
LOKXTD-30C4FM	Black Hi-Tech Trans Dipstick Ford C-4 Firewall Mount	
LOKXTD-30C4FMPAN	Black Hi-Tech Trans Dipstick Ford C-4 Pan Firewall Mount	
LOKXTD-30C6FM	Black Hi-Tech Trans Dipstick Ford C-6 Firewall Mount	

Part No.	Description	Price
<b>Transmission Dipstick Assemblies Cont.</b>		
LOKXTD-3AODFM	Black Hi-Tech Trans Dipstick Ford AOD Firewall Mount	
LOKXTD-3727FM	Black Hi-Tech Trans Dipstick Chrysler 727 Firewall Mount	
LOKXTD-3350TM	Black Hi-Tech Trans Dipstick GM TH-350 Trans Mount	
LOKXTD-3400TM	Black Hi-Tech Trans Dipstick GM TH-400 Trans Mount	
LOKXTD-3700TM	Black Hi-Tech Trans Dipstick GM 700-R4 Trans Mount	
LOKXTD-30C4TM	Black Hi-Tech Trans Dipstick Ford C-4 Trans Mount	
LOKXTD-30C6TM	Black Hi-Tech Trans Dipstick Ford C-6 Trans Mount	
LOKXTD-3727TM	Black Hi-Tech Trans Dipstick Chrysler 727 Trans Mount	
LOKX1209127	Black Trans Dipstick GM Powerglide Direct Mount	
LOKX1210147	Black Trans Dipstick GM Powerglide OEM/Aftermarket Firewall Mount	
LOKX1211237	Black Trans Dipstick GM 700R-4 Trans Mount	
LOKX1211447	Black Trans Dipstick Chrysler 727 Firewall Mount	
LOKX1208147	Black Replacement Bottom Fitting GM TH-350/400 For Locking Dipsticks	
<b>Engine Flexible Engine Dipsticks</b>		
LOKXED-5001	Black Flexible Engine Dipstick SB Chevy 1980-Up	
LOKXED-5002	Black Flexible Engine Dipstick SB Chevy Pre-1979	
LOKXED-5003	Black Flexible Engine Dipstick BB Chevy	
LOKXED-5006	Black Flexible Engine Dipstick BB Chevy 502	
LOKXED-5008	Black Flexible Engine Dipstick GM LS1	
LOKXED-5009	Black Flexible Engine Dipstick GM Ramjet	
LOKXED-5004	Black Flexible Engine Dipstick SB Ford 302	
LOKXED-5005	Black Flexible Engine Dipstick SB Ford 351W	
LOKXED-5010	Black Flexible Engine Dipstick SB Ford 289-302, 1962-69	
LOKXED-5011	Black Flexible Engine Dipstick BB Ford 429-460	
LOKXED-5012	Black Flexible Engine Dipstick BB Ford "FE" 390-428	
LOKXED-5014	Black Flexible Engine Dipstick Ford Modular 4.6L	
LOKXED-5015	Black Flexible Engine Dipstick Chrysler 5.7L Hemi	
<b>Anchor-Tight Locking Flexible Engine Dipsticks</b>		
LOKX1220047	Black Flexible Engine Dipstick SB Ford 351W, Screws Into Pan	
LOKX1220077	Black Flexible Engine Dipstick GM LS1, 1997-Up	
LOKX1220177	Black Flexible Engine Dipstick Universal 1/4"NPT Fitting	

# New Products!



**Call For  
Great Prices!**

## Dodge Steering Box Stabilizers

Eliminate steering wander and wobble caused by excessive shaft play in the steering box of late model Dodge trucks. SBS also prevents frame flex at the steering box mounting point, resulting in more positive steering feel. Silver powder coated SBS features a greasable, high quality bearing and includes hardware and instructions.



Part No.	Description
BDD1032004	Steering Box Stabilizer, 1994-02 Dodge 4WD
BDD1032005	Steering Box Stabilizer, 2003-08 Dodge 4WD

## Dodge Track Bars

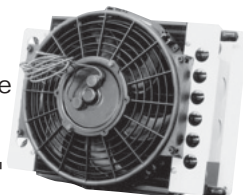
The perfect solution for added steering stability, Track Bars prevent the side-to-side movement in the front axle of late model Dodge 4WD trucks as well as the associated wear, wandering and wobble. Adjustable Track Bars are manufactured from 1-3/8" DOM (Drawn Over Mandrel), heavy wall tubing with formed and welded collars and durable, polyurethane bushings. Accommodates trucks with up to 4" lifts.



Part No.	Description
BDD1032011	Track Bar, 1994-2002 Dodge 4WD
BDD1032012	Track Bar, 2003-07 Dodge 4WD

## Auxiliary Transmission Cooler BDD1030610

Reduce transmission fluid temperatures and extend transmission life. Large capacity, remote oil cooler features a copper/aluminum tube and fin core combined with a high flow 650 CFM 10" Tornado electric fan.



## Flow-MaX Lift Pump Kits

Compact, quiet and capable of delivering sufficient fuel to engines with over 600 horsepower. Fuel pumps feature a proven gerotor design, hard anodized aluminum body and pump 180 gallons per hour at 10 PSI, and up to 200 GPH at full flow. An ideal replacement for the stock fuel pump.



Part No.	Description
BDD1050300B*	Flow-MaX Pump Kit, 1998-99 Dodge, 24-Valve
BDD1050301B*	Flow-MaX Pump Kit, 2000-02 Dodge
BDD1050305B*	Flow-MaX Pump Kit, 2003-04 Dodge
BDD1050310B	Flow-MaX Pump Kit, 2005-07 Dodge, 5.9L

\*1998-2004 Dodge Trucks That Have An OEM Intake Pump Conversion Done Require A BDD1050302 Retrofit Kit.

## Ford 7.3L Compressor Wheel Upgrade BDD1047000

Engineered exclusively for 1999.5-2003 Ford 7.3L Power Stroke diesels, replacement compressor wheel for the stock turbo-charger eliminates compressor surge, offers more airflow at upper boost levels and breathes new life to the stock turbo. Allows for more efficient output when using mild power increasing modules and tuners.



*The Original*  
**CALIFORNIA**  
*Car Duster*

## The Original California Jelly Blade Your Choice -

Whisk water away, drying vehicles in 1/3 the time of chamois and towels. V-blade design feature exceptional contouring and flexing ability, while the ergonomic handle allows ease of use. The "extender" end allows the Jelly Blade to reach into tight areas and the "detailer" end is great for recessed areas like side view mirrors. Offered in clear or red. Proudly made in the USA.



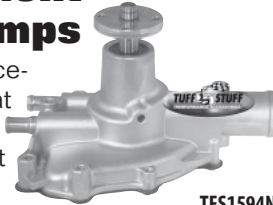
Part No.	Description
CCD20080C	The Original California Jelly Blade, Clear
CCD20080R	The Original California Jelly Blade, Red





## OE As Cast Replacement SuperCool Water Pumps

SuperCool, OE style as-cast replacement water pumps have impellers that reduce engine temperatures by up to 20° and provide 30% more coolant flow. Heavy duty ball/roller bearings, high strength steel center shafts, premium seals, OE ports and connections are standard.



TFS1594N

Part No.	Description	Price
TFS1529N*	Chevy I-6 194, 230, 250, 292, As-Cast	
TFS1354N	SB Chevy, Short, As-Cast SuperCool	
TFS1449N	SB Chevy, Long, As-Cast SuperCool	
TFS1675N	SB Chevy, 1987-95 V8/V6 TBI Rev. Rotation, Long, As-Cast SuperCool	
TFS1494N	BB Chevy, Short, As-Cast SuperCool	
TFS1461N	BB Chevy, Long, As-Cast SuperCool	
TFS1534N	SB Chevy Corvette 1972-82, Long, As-Cast SuperCool	
TFS1635N	SB Chevy Corvette 1984-91, Short, Aluminum, As-Cast SuperCool	
TFS1484N	BB Chevy Corvette, Short, As-Cast SuperCool	
TFS1317N	BB Chrysler 383-440, 1958-79, As-Cast SuperCool	
TFS1594N	SB Ford 5.0L, 1986-93, As-Cast SuperCool	
TFS1432N	SB Ford 289-351W, 1965-73, Pass. Side Inlet, As-Cast SuperCool	
TFS1468N	SB Ford Windsor, 1970-78, Driver's Side Inlet, As-Cast SuperCool	
TFS1469N	Ford Cleveland, 1970-78, Driver's Side Inlet, As-Cast SuperCool	
TFS1625N	SB Ford 5.0L, 1979-85, Aluminum, As-Cast SuperCool	
TFS1470N*	BB Ford 429-460, 1970-77, As-Cast	
TFS1421N	BB Ford 390-428 "FE", As-Cast SuperCool	
TFS1444N*	Olds 260-455, 1968-70 w/A/C & 1971-85 w/o A/C, As-Cast	
TFS1504N*	Olds 260-455, 1971-90 w/A/C, As-Cast	
TFS1445N*	Pontiac 326-400, 1966-69, 8-Bolt, As-Cast	
TFS1475N*	Pontiac 350-455, 1969-81, 11-Bolt, As-Cast	

\* NOT SuperCool.

## Type II Aluminum Power Steering Pumps

Lightweight, compact cast aluminum power steering pumps are ideal for tight installations and are designed for use with a remote reservoir. Pumps use a 1200 PSI valve and include -6 and -10 AN aluminum fittings. Mounting brackets are offered for small and big block Chevy, short water pump engines, and may be purchased separately.



Part No.	Description	Price
TFS6175AL	Type II Power Steering Pump, Cast Aluminum	
TFS6175ALP	Type II Power Steering Pump, Polished Cast Aluminum	
TFS6175ALB	Type II Power Steering Pump, Black Aluminum	



## Standard 20° Layback Containment Seats

Standard 20° layback seats for entry level short track cars are MIG welded from .125" thick 5052 grade aluminum, include built-in head and shoulder restraints and are HANS compatible. Seat height may be adjusted up to 1-1/2" vertically. Available in traditional and road race versions. Cover must be purchased separately and is available in black cloth only.



Seat Description	Part No.	Seat Price	Cover Part No.	Cover Price
14" Entry Level Seat	KIR70100		KIR70111	
15" Entry Level Seat	KIR70300		KIR70311	
16" Entry Level Seat	KIR70500		KIR70511	
17" Entry Level Seat	KIR70700		KIR70711	
15" Entry Level Road Race Seat	KIR71300		KIR71311	
16" Entry Level Road Race Seat	KIR71500		KIR71511	
17" Entry Level Road Race Seat	KIR71700		KIR71711	



# New Products!



KCH1000



## LED Tail, Brake, Turn & Backup Lights

KC LED lights use impact and UV resistant polycarbonate lenses that are sonically sealed to prevent moisture issues. While typical, standard incandescent light bulbs might last only 1,000 to 2,000 hours, KC long-life LED's last in excess of 100,000 hours with increased visibility and safety.



KCH1029

Part No.	Description	Price
KCH1000	Trailer Tail Light Kit Without Backup Lights	
KCH1001	Jeep And Trailer Tail Light Kit With Backup Lights	
KCH1002	4" Round Tail/Brake Light Red/Red, Light Only	
KCH1003	4" Round Tail/Brake Light Amber/Amber, Light Only	
KCH1004	4" Round Tail/Brake Light Clear/Red, Light Only	
KCH1005	4" Round Tail/Brake Light Clear/Amber, Light Only	
KCH1006	4" Round Back-Up Light Clear/White, Light Only	
KCH1008	5" Rectangular Tail/Brake Light Red/Red, Light Only	
KCH1009	5" Rectangular Tail/Brake Light Amber/Amber, Light Only	
KCH1011	5" Rectangular Tail/Brake Light Clear/Amber, Light Only	
KCH1012	5" Rectangular Backup Light Clear/White, Light Only	
KCH1013	6" Oval Tail/Brake Light Red/Red, Light Only	
KCH1014	6" Oval Tail/Brake Light Amber/Amber, Light Only	
KCH1015	6" Oval Tail/Brake Light Clear/Red, Light Only	
KCH1016	6" Oval Turn Signal Light Clear/Amber, Light Only	
KCH1017	6" Oval Backup Light Clear/White, Light Only	
KCH1018	6" Oval Clearance Light Blue/White, Light Only	
KCH1019	6" Oval Sequential Turn Signal Red/Red, Light Only	
KCH1020	6" Oval Sequential Turn Signal Amber/Amber, Light Only	
KCH1021	6" Oval Sequential Turn Signal Clear/Red, Light Only	
KCH1022	6" Oval Sequential Turn Signal Clear/Amber, Light Only	
KCH1029	Clearance, GM Dually Tailgate Amber Light And Plug	
KCH1030	Clearance, GM Dually Tailgate Red Light And Plug	
KCH1031	2" Round Side Marker Light Kit Amber	
KCH1032	2" Round Side Marker Light Kit Red	
KCH1034	6" Oval Turn Signal/Side Market Light Kit Red	
KCH1036	6" Oval Turn Signal/Side Marker Light Kit Amber	
KCH1037	6" Oval Grommet	
KCH1038	4" Round Grommet	
KCH1039	5" Rectangular Grommet	
KCH1040	3-Wire Plug	



## SEC8 SCOUT Winch MMM77-53141



From the foundation of the popular 8,000 SEC8 comes the competition ready, expedition willing SCOUT. This winch features 96 foot of Dyneema Synthetic Rope, a rugged, black anodized aluminum hawse fairlead, and a durable powder coated clevis hook. Includes power-in, power-out remote control.



## 5" O.D. x 9.5" Tall Front Coil Springs Your Choice -



Part No.	Rate
EIB0950-500-0200	200 lbs.
EIB0950-500-0250	250 lbs.
EIB0950-500-0300	300 lbs.
EIB0950-500-0350	350 lbs.
EIB0950-500-0400	400 lbs.

## 2.50" I.D. x 10" Tall Extreme Travel Coil-Over Springs Your Choice -



Part No.	Rate
EIB1000-2530-0300	300 lbs.
EIB1000-2530-0325	325 lbs.
EIB1000-2530-0350	350 lbs.
EIB1000-2530-0375	375 lbs.
EIB1000-2530-0400	400 lbs.
EIB1000-2530-0425	425 lbs.
EIB1000-2530-0450	450 lbs.

## 2.50" I.D. x 14" Tall Extreme Travel Coil-Over Springs Your Choice -



Part No.	Rate
EIB1400-2530-0125	125 lbs.
EIB1400-2530-0150	150 lbs.
EIB1400-2530-0175	175 lbs.
EIB1400-2530-0200	200 lbs.
EIB1400-2530-0225	225 lbs.
EIB1400-2530-0250	250 lbs.





**Fast Shafts**  
Pg. 13, 19



## Billet 1310 U-Joint Strap Kit FSHBBSK

Eliminates the problems associated with overtightened and distorted U-bolts. Designed for use with Quick Changes, ball spline transmissions, or Ford 9" rears using short/narrow, 1310 style U-joints. Kit includes billet steel U-joint straps, case hardened bolts, nuts, flat and lock washers.

## Stock Car/Street Stock/Hobby Stock Steel Driveshafts

Steel driveshafts are manufactured from high quality, 1020 DOM (Drawn Over Mandrel) .083" wall steel tubing for exceptional performance and durability. All driveshafts are precision balanced using the ShaftMaster by Axiline. Driveshafts are painted white to meet most sanctioning body and track rules.



Part No.	Description	Price
FSH25083-52.5	2-1/2" Dia. x 52.5" Long Steel Driveshaft	
FSH25083-51.5	2-1/2" Dia. x 51.5" Long Steel Driveshaft	



## Planogram Display Rack ARA999-605



New Planogram includes three of PowerAid's most popular part numbers including Chevrolet '07-10 GM P/U 4.8L, 5.3L, 6.0L, 6.2L (ARA200-617), Ford '05-10 P/U 5.4L (ARA400-531) and Jeep '91-06 Wrangler 4.0L (ARA310-510). In addition to the saleable product, the rack also includes three display-only clamshell units for additional product awareness.



## Water-To-Oil Heat Exchanger FSR101700

Much more efficient than traditional air-to-oil units. Compact, high capacity water-to-oil heat exchanger is 11" long x 4" wide x 3" thick. Built-in mounting flanges ease installation.



## DC Torque

The DC Torque combines a flat black finish, machined accents and tough satin clear coat. Ideal for newer trucks and SUV's that require higher offsets, additional brake caliper clearance and the ability to use the factory TPMS (Tire Pressure Monitoring Sensors). The perfect choice for the truck owner that wants to combine style with usability on or off-road. Each wheel is sold complete with center cap.



Part No.	Size	Approx. Weight	Bolt Circle	Back Space	Offset (mm)	Max Load	Price
MIC1068170	16 x 8.0	23 lbs.	8 x 170	4-1/2"	+00	3,640	
MIC1068482	16 x 8.0	23 lbs.	8 x 6.5"	4-1/2"	+00	3,640	
MIC1078431	17 x 8.5	25 lbs.	5 x 5.0"	5"	+06	2,500	
MIC1078402	17 x 8.5	23 lbs.	5 x 5.5"	5"	+06	2,500	
MIC1078462	17 x 8.5	24 lbs.	6 x 135	5"	+06	2,500	
MIC1078170	17 x 8.5	26 lbs.	8 x 170	5"	+06	3,640	
MIC1078482	17 x 8.5	25 lbs.	8 x 6.5"	5"	+06	3,640	
MIC1088431	18 x 8.5	27 lbs.	5 x 5.0"	5-1/2"	+20	2,500	
MIC1088462	18 x 8.5	27 lbs.	6 x 135	5-1/2"	+20	2,500	
MIC1088170	18 x 8.5	28 lbs.	8 x 170	4-3/4"	+00	3,640	
MIC1088482	18 x 8.5	27 lbs.	8 x 6.5"	4-3/4"	+00	3,640	
MIC1029402	20 x 9.0	35 lbs.	5 x 5.5"	5-1/2"	+13	2,500	
MIC1029462	20 x 9.0	34 lbs.	6 x 135	6-3/16"	+30	2,500	
MIC1029170	20 x 9.0	35 lbs.	8 x 170	4-1/2"	-13	3,640	
MIC1029482	20 x 9.0	36 lbs.	8 x 6.5"	4-1/2"	-13	3,640	

# New Products!



**Fivestar**  
Pg. 14, 15



## MD3 Wheel Flares And Rocker Panels

Interconnecting pieces enhance aerodynamics, add rigidity to the sides of the body and are easy to mount. The three-piece kit includes all flares needed for one side (specify right or left). Inset the wheel flares around the back half of the front wheel openings. Complete, two-piece rear wheel flares connect to a rocker panel at the bottom of the rear quarter panel. Rocker panels, sold individually, fit either side. Three rockers complete the installation: one rocker between the front and rear wheel flares, and 1/2 piece behind the rear wheel flare. Body components are available in black, Chevron blue, orange, red, white and yellow.

Description	Black Part No.	Chevron Blue Part No.	Orange Part No.	Red Part No.	White Part No.	Yellow Part No.	Price
MD3 Rocker	FIV007-5500-B	FIV007-5500-CB	FIV007-5500-OR	FIV007-5500-R	FIV007-5500-W	FIV007-5500-Y	
MD3 Wheel Flares, Left	FIV007-261-BL	FIV007-261-CBL	FIV007-261-ORL	FIV007-261-RL	FIV007-261-WL	FIV007-261-YL	
MD3 Wheel Flares, Right	FIV007-261-BR	FIV007-261-CBR	FIV007-261-ORR	FIV007-261-RR	FIV007-261-WR	FIV007-261-YR	

## MD3 Exclusive High-Impact Plastic Fenders

Designed specifically for Late Model series rules, lightweight and durable MD3 fenders have been updated to meet current rules and for improved fit. Fenders feature a new top-line contour that improves aerodynamics and meets the maximum height rule of 2.5". Fenders are offered in black, Chevron blue, orange, red, white and yellow.

Description	Black Part No.	White Part No.	Price
MD3 Fender, Left	FIV007-25-BL	FIV007-25-WL	
MD3 Fender, Right	FIV007-25-BR	FIV007-25-WR	

Description	Chevron Blue Part No.	Orange Part No.	Red Part No.	Yellow Part No.	Price
MD3 Fender, Left	FIV007-25-CBL	FIV007-25-ORL	FIV007-25-RL	FIV007-25-YL	
MD3 Fender, Right	FIV007-25-CBR	FIV007-25-ORR	FIV007-25-RR	FIV007-25-YR	



## MD3 Lightweight Composite Hood

Advanced lightweight composite is lighter and more durable than carbon fiber. Hoods are slightly oversized and may be cut down to fit your application. Available in black or white.

Description	Black Part No.	White Part No.	Price
MD3 Lightweight Hood	FIV007-3301LB	FIV007-3301LW	



## MD3 Nose ID Graphics Kits

New graphics kits use an aggressive adhesive that effectively eliminates the possibility of blowing off. Long lasting graphics include a laminated protective coating and are sandblast and chemical resistant.

Description	Dodge Challenger Part No.	Chevy Corvette Part No.	Ferrari Part No.	Price
MD3 Nose ID Graphics	FIV445-410-ID	FIV925-410-ID	FIV975-410-ID	





**Fivestar**  
Pg. 14, 15

## Intake Air Box Heat Shield Kit FIV000-52HS

Light-duty reflective film reflects up to 90% of the radiant heat from your engine proving a cooler incoming air charge. Heat shield protects against heat up to 500°F. and features a self-adhesive backing that allows easy application or removal. Weighs less than 4 oz.



Shown installed on  
2BBL cold air base

## Two-Piece Composite Roof And Factory Steel Quarter Panels For 1988 Chevy Monte Carlo

The economical way to replace old, hard-to-find steel roofs and quarter panels. Two-piece composite roof features overlapping seams for a neat fit and easy installation. A-post recess is designed to work with fabricated Five Star doors. OEM style quarter panels are custom stamped, ensuring eased bumper cover installation. Quarter and roof panels include built-in window recesses for a factory fit and look.



Part No.	Description	Price
FIV601-28SL	1988 Monte Carlo Complete Quarter Panel, Left	
FIV601-28SR	1988 Monte Carlo Complete Quarter Panel, Right	
FIV601-5102	1988 Monte Carlo Two-Piece Composite Roof, Rear Half	
FIV601-5112	1988 Monte Carlo Two-Piece Composite Roof, Front Half	

## Lower Nose Wear Strips For 1988 Chevy Monte Carlo

Wear strips attach to lower nose offering protection to the nose assembly, while increasing aerodynamics. Sold per pair in choice of black or white.

Part No.	Description	Price
FIV600-400W	1988 Monte Carlo Lower Nose Wear Strips, One Pair, White	
FIV600-400B	1988 Monte Carlo Lower Nose Wear Strips, One Pair, Black	



## 26 Series Steel Monotube Shock Absorbers

The best shock in its class! Linear valved shock absorbers utilize a one-piece body design that is manufactured with a 46mm piston, 15mm centerless ground, hard chrome plated piston rod and replaceable 1/2" I.D. bearings. Shocks are racer revalveable and rebuildable and may be run upside down for reduced unsprung weight. Deflective disc valving allows for complete control of suspension at low shaft speeds without creating extreme forces at high shaft velocities.



Part No.	Stroke	Comp.	Reb.	Price
QA12675M	7"	5	5	
QA12675-3M	7"	5	3	
QA12673-5M	7"	3	5	
QA12673-7M	7"	3	7	
QA12694M	9"	4	4	
QA12695M	9"	5	5	
QA12693-5M	9"	3	5	
QA12698-2M	9"	8	2	
QA12697-2M	9"	7	2	
QA12696-2M	9"	6	2	

## Coil-Over Kit For 26 Series Shock Absorbers QA1CK2609

Premium kit includes a spring glider for 5" O.D. springs. Compatible with 7" and 9" stroke.

Shock Sold  
Separately





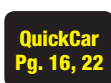
# New Products!



## GM LS Into '67-69 Chevy Camaro/Pontiac Firebird Engine Swap Headers

Popular, engine swap headers are a superior fit when installing GM LS engines into 1967-69 Chevrolet Camaro/Pontiac Firebird chassis. Headers have 1-3/4" dia. primary tubes and add extra horsepower and torque. Use with the LS engine mounts. Headers are offered in "Darkside" black or "Titanium" ceramic coated finishes with gaskets and hardware.

Part No.	Description	Price
HKR2288-3	LS 1967-69 Camaro/Firebird, "Darkside" Black Ceramic Coated	
HKR2288-4	LS 1967-69 Camaro/Firebird, "Titanium" Ceramic Coated	



## LED Replacement Bulbs

Upgrade standard gauge lighting to bright LED illumination. Brighter and longer lasting than traditional lights. Compatible with all Quickcar gauges and warning lights.



Part No.	Description	Price
QRP61-698	LED Bulbs, 4-Pack	
QRP61-699	LED Bulbs, Each	

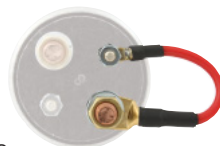
## Top Mount Battery Post Terminals QRP57-610

Made from nickel plated brass for exceptional conductivity. Top mount terminals allow attaching battery cables to top mount batteries. Sold per pair.



## Master Disconnect Switch Jumper Wire QRP55-120

Short, 3" jumper wire is designed specifically for use with the Quickcar 55-012 master disconnect (with alternator) to simplify switch wiring. Attaches from large, 3/8" terminal to small, 10/32" stud.



## Forged Narrow Mount Dynalite Calipers

Ideal for late models, modifieds, sprints, off-road and road racing. Exceptionally rigid, FNDL calipers are engineered to reduce deflection, while the resulting decrease in fluid volume displacement translate to increased clamping efficiency and less pedal travel. A direct replacement for all previous NDL calipers and similar units with 3.50" centered mounting tabs. Calipers require 7816 or 7216 type brake pads.

Part No.	Bore Size	Disc Width	Price
WIL120-11573	1.75"	1.25"	
WIL120-11572	1.75"	.810"	
WIL120-11572-SI*	1.75"	.810"	
WIL120-11571	1.75"	.380"	
WIL120-11571-SI*	1.75"	.380"	
WIL120-11576	1.38"	1.25"	
WIL120-11575	1.38"	.810"	
WIL120-11574	1.38"	.380"	

\*Signifies Side Inlet.

## Starter Solenoid Jumper Wires

Short, jumper wires are designed to simplify starter wiring. Offered for most popular starters.



Part No.	Description	Price
QRP50-2001	Starter Solenoid Jumper Wire, Spade Terminal, Allstar/Tilton Starters	
QRP50-2002	Starter Solenoid Jumper Wire, Ring Terminal, Bert/Brinn Starters	

## Electric Wing Solenoid Momentary Switch

Designed specifically for mini-sprints, momentary switch allows changing wing angle right from the driver's seat.



Part No.	Description	Price
QRP50-402	Electric Wing Solenoid Momentary Switch	
QRP50-403	Electric Wing Solenoid Momentary Switch, Pre-Wired	

## Oil Pressure Switch QRP61-733

Activates warning light when oil pressure drops below 30 PSI. Switch has a higher pressure rating to warn of trouble earlier.

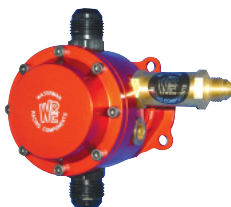






## Late Model Fuel Pump WATLM300

Engineered for circle track racing, Late Model Fuel Pump is machined from forged aluminum and fitted with machined steel shafts and precision lapped gears. Includes a swivel flange for easy rotation and alignment after mounting and a -6AN jetted check valve. Should be used with a dead head style pressure regulator. May be used in either clockwise or counter-clockwise rotation.



## FAST-GATE Shifter TCI616541

Universal automatic transmission shifter combines high performance, reliability and easy installation. FAST-GATE is fully compatible with most 3- and 4-speed automatic transmissions for street or race and uses high quality components and cutting-edge engineering. Reverse lock-out mechanism eliminates accidental shifting into reverse. Shifter is competitively priced and includes injection molded cover, shift cable and all hardware.



## Clamp-On Tow Hook WEHWM207150

Required by most tracks, clamp-on tow hook offers wrecker operator an easy access spot to hook up race car. Clamps onto 1-1/2" dia. round chassis tubing.



## Limit Chain Holder With Bearing

Specialized Chain Holder allows the chain to rotate free and pull straight on the rear end, while eliminating the possibility of binding. Chain holder installs on the left rear axle and is held in place using a steel clamp (WEHWM210SC) on each side.



## Aluminum Roller Bearing Suspension Cage For Rocket Chassis WEHWM300-ROCKET

Engineered exclusively for Dirt Late Model Rocket chassis, modular design roller bearing suspension cage adds unsurpassed adjustability and the option of clamping the shock plate to the tube or allow it to rotate with the housing. Shock plates come with 4", 5", 6", and 7" shock drop options with a no bind swivel mount. Four-bar mounts are based on the standard 9" center-to-center spacing with plenty of holes to change the indexing of the cage. Sold complete with clamp rings, one shock swivel, two straight mounts and required hardware.



## Dirt Late Model Lift Bar WEHWM215D

Lightweight, yet rigid aluminum lift bar features 5th coil mounts at 32", 34", 36", and 38", and the 6th coil mounted at 40". Sold complete with necessary rear end brackets and hardware.



## Adjustable Steel J-Bar

Manufactured from rigid, DOM (Drawn Over Mandrel) steel. J-bars feature up to 2" of adjustment.



Part No.	Description	Price
WEHWM210S	Steel Limit Chain Holder	
WEHWM210SC	Steel Clamp	

Part No.	Description	Price
WEHWM40S18-20	Adjustable Steel J-Bar, 18"-20"	
WEHWM40S20-22	Adjustable Steel J-Bar, 20"-22"	

## 3/4" Double Adjuster WEHWM40AL

Machined from stainless steel, double adjuster has 2-1/2" of RH thread and 2-1/2" of LH thread. Long, 7-1/2" adjuster includes a 2-1/2" center hex.



# New Products!



## SB Chevy Titan TXR Intake Manifolds

Innovative, composite plastic intake manifolds for small block Chevy deliver 15 plus horsepower more than competing manifolds. Offered in Race, Street/Strip and Dual Plane versions, the Titan TXR runs up to 30° cooler than traditional manifolds and weighs 9-11 lbs. less than aluminum units. Modular design manifold includes interchangeable runners, cast-in nitrous bosses, dual distributor hold downs and rubber Viton gaskets. Distributor clamp and (12) 3/8" bolts and washers are included.

Part No.	Description	Price
AFR4801	Race Intake Manifold, 5.500" Carb Height	
AFR4802	Street/Strip Intake Manifold, 4.580" Carb Height	
AFR4804	Dual Plane Intake Manifold, 4.720" Carb Height	



DGHD380-C

## 1963-82 Corvette Headers and Side Pipes

Side Mount headers, designed for 1963-82 Corvette, are CNC mandrel bent 16 gauge steel tubing for superior fit and durability. Headers have 3/8" thick machined flanges and sealing beads, TIG-welded ports and precisely formed collectors. Headers are available chrome plated, silver ceramic coated or with black painted finishes. Gaskets and required hardware. Side pipes and mufflers must be purchased separately.

Part No.	Description	Price
DGHD380-C	Side Mount SB Chevy Headers, Chrome Plated	
DGHD380-B	Side Mount SB Chevy Headers, Black Painted	
DGHD380	Side Mount SB Chevy Headers, Silver Ceramic Coated	
DGHD381-C	Side Mount BB Chevy Headers, Chrome Plated	
DGHD381-B	Side Mount BB Chevy Headers, Black Painted	
DGHD381	Side Mount BB Chevy Headers, Silver Ceramic Coated	
DGHD930-C	Side Pipes, Chrome Plated	
DGHD930-B	Side Pipes, Black Painted	
DGHD930	Side Pipes, Silver Ceramic Coated	
DGHD950	Glass Pack Muffler	
DGHD951	Reverse Flow Muffler	
DGHD952	Maximum Flow Muffler	



## 340 Stealth Electric Fuel Pump

High output, in-tank electric fuel pump is designed to satisfy the needs of most popular EFI applications and bolts right into most existing hanger assemblies. Lightweight, compact pump boasts over 30% more flow than typical high performance in-tank pumps and retains the factory wiring and mounting provisions. Fits most vehicles where a Walbro 255 pump is applicable. Three inlet configurations cover a wide range of vehicles. Each pump includes all drop parts, hose, hose clamps and wiring harness.

Part No.	Description	Price
AFS11140	340 Stealth Fuel Pump, Center Inlet	
AFS11141	340 Stealth Fuel Pump, Offset Inlet	
AFS11142	340 Stealth Fuel Pump, Offset Inlet/Inline With Outlet	

## Application Guide

Make	Year	Pump	Part No.
<b>Acura</b>			
Integra	1994-2001	Aeromotive 340 Stealth	AFS11142
RSX	2002-2011	Aeromotive 340 Stealth	AFS11142
<b>Ford</b>			
Mustang	1985-1997	340 Stealth Pump excepts '96-97 Cobra	AFS11140
Mustang Cobra	1996-1997	Aeromotive 340 Stealth	AFS11142
<b>Mitsubishi</b>			
Eclipse	1995-1998	225LPH AWD and FWD Turbo	AFS11142
	1990-1994	340 Stealth Pump AWD Turbo Only	AFS11142
	1995-1999	Aeromotive 340 Stealth	AFS11142
<b>Nissan</b>			
240SX	1989-1994	Aeromotive 340 Stealth	AFS11141
	1990-1994	Aeromotive 340 Stealth	AFS11141
	1990-1996	Aeromotive 340 Stealth	AFS11142
<b>Subaru</b>			
Impreza WRX	1998-1999	Aeromotive 340 Stealth	AFS11141
	2002-2006	Aeromotive 340 Stealth	AFS11142
Impreza WRX/STi	2004-2007	Aeromotive 340 Stealth	AFS11142





## Radiator Relief DSN040200P

Buy a 16 oz bottle of Radiator Relief and receive a second bottle 50% off. Must use part number above.

Radiator Relief™ transfers heat more efficiently through the radiator and will reduce operating temperature up to 30°F. reducing engine wear that occurs during extreme use. Radiator Relief™ is also formulated with a corrosion inhibitor that reduces mineral deposits. This is the first additive that maintains pH levels that otherwise fluctuate over time resulting in core damage. 16 oz bottle.



## 5000lb Vehicle Weighing Scale PFM67650

Scale features weight for each wheel and total vehicle weight. Percentage weight is also featured. The individual scale pads are 14 1/2" x 9 1/2" x 2 1/2" with a 1,250 lb capacity per pad for a total scale capacity of 5,000 lbs. Scale is accurate to 1/10 of 1%. Includes a backlit display powered by 4 AA batteries, durable carrying case and 20' cables. Shows front and rear percentages with oversized, easy to read display characters. Batteries included.



## Electric Exhaust Cutout Kits

Choose from single or dual cutout kits. Includes electric exhaust cutout, wiring harness, stainless steel mounting hardware, extra thick gasket and a lifetime warranty. Dual cutout kits have everything in the single kit but include two electric exhaust cutouts, two gaskets and the wiring harness has one switch that controls both cutouts.



RRPEC300D

Part No.	Size	Kit	Price
RRPEC250S	2-1/2"	Single	
RRPEC250D	2-1/2"	Dual	
RRPEC300S	3"	Single	
RRPEC300D	3"	Dual	
RRPEC350S	3-1/2"	Single	
RRPEC350D	3-1/2"	Dual	
RRPEC400S	4"	Single	
RRPEC400D	4"	Dual	
RRPEC500S	5"	Single	



**Consumer  
Rebate**

**Valid 3/1/11 - 8/31/11**

## Direct From Rancho! Suspension And Shock Rebate

Buy a lift kit plus (4) RS9000XL shocks, get **\$500 rebate.**

Buy a lift kit plus (4) RS5000 shocks, get **\$400 rebate.**

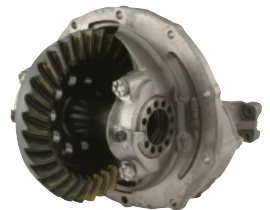
Buy (4) Quick Lift shocks, get **\$100 rebate.**

Buy (4) RS9000XL shocks, get **\$100 rebate.**

Buy (4) RS5000 shocks, get **\$50 rebate.**



**Fast Shafts  
Pg. 13, 19**



## Ford 9" 31-Spline Steel Full Spool Assemblies

Bulletproof spool assemblies are offered in ratios from 4.56 to 6.50 to fit Ford 9" rear axles. 1330 yoke.

Part No.	Description	Price
FSH9456	4.56 Ratio	
FSH9471	4.71 Ratio	
FSH9486	4.86 Ratio	
FSH9500	5.00 Ratio	
FSH9514	5.14 Ratio	
FSH9529	5.29 Ratio	
FSH9543	5.43 Ratio	
FSH9567	5.67 Ratio	
FSH9583	5.83 Ratio	
FSH9600	6.00 Ratio	
FSH9620	6.20 Ratio	
FSH9633	6.33 Ratio	
FSH9650	6.50 Ratio	





## Hedders

For engines in the stock location with stock width oil pans and stock mounts. Baked-on, black painted finish. See Hedman catalog for fitment notes/requirements.



Part No.	Description	Tube Dia.	Collector Size	Price
<b>General Motors</b>				
HED65003	'67-69 Chevy Camaro/'68-74 Nova 283-400	1-3/4"	3"	
HED65104	'70-81 Chevy Camaro, 283-400	1-3/4"	3"	
HED68190	'67-69 Camaro/'68-74 Nova, 396-454	1-3/4"	3"	
HED68290	'64-77 Chevelle/El Camino, 283-400	1-5/8"	3"	
HED68310	'78-87 Malibu/Monte Carlo, 283-400	1-1/2"	3"	
HED68460	'82-92 Camaro/Firebird, 283-400	1-5/8"	3"	
HED68470	'82-92 Camaro/Firebird, Shorty, 283-400	1-5/8"	3"	
HED68600	'67-81 Camaro, Shorty, 283-400	1-5/8"	3"	
HED68610	'67-81 Camaro, Shorty, 396-454	1-3/4"	3"	
HED69080	'67-87 1500-3500/Suburban, 2wd, 283-400	1-3/4"	3"	
HED69090	'67-87 1500-3500/Suburban, 2wd, 283-400	1-5/8"	3"	
HED69110	'68-87 2500-3500/Suburban, 2wd, 396-454	1-3/4"	3"	
HED69230	'67-81 1500-2500, 4wd, 283-400	1-5/8"	3"	
HED69440	'88-95 1500-3500, 4wd, 305-350	1-5/8"	3"	
HED69650	'96-00 5.7L Vortec 1500-2500, Suburban, Tahoe, Denali, Yukon, XL, Escalade & ESV	1-5/8"	Stock	
HED69680	'99-03 4.8L,5.3L,6.0L 1500- 3500, Avalanche, Sierra, Silverado, Escalade Ext Suburban, Tahoe, Denali, Yukon, XL, Escalade & ESV	1-5/8"	Stock	
HED69690	'99-07 4.8L,5.3L,6.0L 1500-3500, Avalanche, Sierra, Silverado, Escalade Ext., Suburban, Tahoe, Denali, Yukon, XL, Escalade & ESV	1-5/8"	Stock	
HED69490	'82-95 S-10, 2wd, Engine Swap, 283-400	1-5/8"	3"	
HED69640	'66-91 1500-3500, 2wd, Engine Swap, 283-400	1-1/2"	2-1/2"	
<b>Chrysler/Dodge/Plymouth</b>				
HED78030	'66-74 Charger/'67-74 Belvedere, 361-440	1-3/4"	3"	
HED78050	'66-74 Charger/'67-76 Belvedere, 273-360	1-5/8"	3"	
HED79540	'96-03 1/2-1 Ton, 2wd, T.E.M.S., 5.9	1-5/8"	Stock	
<b>Ford</b>				
HED88300	'64-73 Mustang/'66-73 Fairlane, 260-302	1-5/8"	3"	
HED88400	'64-73 Mustang/'66-73 Fairlane, Shorty, 260-302	1-1/2"	2-1/2"	
HED89210	'77-1/2-79 F-150/250/350, 4wd, 351M-400	1-3/4"	3"	
HED89270	'82-96 F-150/250/350, 4wd, 351W	1-1/2"	3"	
HED89350	'80-96 F-150/250/350, 4wd, 302	1-1/2"	3"	
HED89360	'77-79 F-150/250/350, 4wd, 351M-400	1-5/8"	3"	
HED89410	'66-77 Bronco, 4wd, 302	1-1/2"	2-1/2"	
<b>Jeep</b>				
HED99190	'72-86 CJ-5/6/7, 4wd, Fenderwell, 304-401	1-3/4"	3"	
HED99200	'72-86 CJ-5/6/7, 4wd, Under Chassis, 290-401	1-5/8"	3"	





## Medium-Duty Helper Springs

Add 2,000 lbs. to the load capacity of pickups, vans, etc. and eliminate sagging springs and load related handling problems. High quality alloy spring steel is used throughout. Lifetime warranty.

Year	Application	EZ-550 EZ-990	Price	LP-15	Price
<b>Chevrolet/GMC</b>					
1982-93	S10 & S15 Blazer, Jimmy And Bravada	HEL550		HEL1535	
1994-03	S10 & S15 Blazer, Jimmy And Bravada	HEL550		HEL815 <sup>3</sup>	
1963-06	C/K 10-1500, Silverado & Sierra 4x2 And 4x4 Pickup	N/A		HEL1535	
1969-01	Suburban, Blazer, Tahoe, Denali, Yukon And Escalade	N/A		HEL1535	
1986-05	Astro And Safari Van <sup>2</sup>	HEL550		HEL815 <sup>3</sup>	
2004-10	Colorado/Canyon	HEL550		N/A	
1972-07	G10, G1500 Van	HEL991		N/A	
1988-98	C/K 10, C/K 1500 Pickup, 2WD And 4WD	HEL985		N/A	
1999-06	C/K 10, C/K 1500 Pickup, 2WD And 4WD	HEL986		N/A	
2007-10	1500 Pickup, 2WD And 4WD <sup>1</sup>	HEL987		N/A	
<b>Dodge</b>					
1990-04	Dakota Pickup 4x2 (Anti-Lock Brakes Only)	HEL550		HEL1515	
1990-04	Dakota Pickup 4x4 (Anti-Lock Brakes Only)	HEL550		HEL815 <sup>3</sup>	
2005-08	Dakota Pickup 2x4, 4x4	HEL550		HEL1515	
1997-03	Durango	HEL550		HEL815 <sup>3</sup>	
1970-03	B100-B150 Van	HEL991		N/A	
1994-02	1500 Ram Pickup, 2WD, 4WD	HEL994		N/A	
2003-10	1500 Ram Pickup, 2WD, 4WD <sup>1</sup>	HEL982		N/A	
<b>Ford</b>					
1998-10	Ranger <sup>2</sup>	HEL550		N/A	
1990-01	Explorer & Mercury Mountaineer	HEL550		N/A	
2000-01	Explorer Sport With 3" Springs	HEL552		N/A	
2000-01	Explorer Sport-Trak <sup>2</sup>	HEL550		HEL1515	
1997-03	F-150 Pickup And Super Crew	HEL991		N/A	
2004-08	F-150 (Except Heritage Edition) <sup>1</sup>	HEL984		N/A	
2009-10	F150	HEL989 <sup>1</sup>		N/A	
1975-08	E-100, E150 Van	HEL991		N/A	
<b>Toyota</b>					
2000-06	Tundra	HEL991		N/A	
2007-10	Tundra	HEL985		N/A	



- EZ-550 - 550 lbs. Level Load Capacity
- Reduces Leaf Spring Wrap Up
- Lighter Loads



- EZ-990 - 2000 lbs. Level Load Capacity
- Mounts Under Factory Axle, U-Bolt Plates
- Medium Loads



- LP-15 - 1500 lbs. Level Load Capacity
- Heavier Load
- Available in Progressive And Constant Rate

### Footnotes:

1 - Step Bracket Style

2 - Do not use on vehicles with composite (plastic) leaf springs

3 - Rear half only due to clearance

N/A - No Current Application



**MAGNAFLOW**  
Exhaust  
PRODUCTS

**Cat-Back**

**SUPER  
SALE!**



**QUICKCAR**  
RACING PRODUCTS

QuickCar  
Pg. 16, 22

## Tire Pressure Gauges

2-1/2" dia. gauges with pressure relief valves use the entire gauge range for more accurate readings. Features include shock resistant boots, 14" hoses and a strain relief on each end.



Part No.	Description	Price
<b>Dry Gauges</b>		
QRP56-020	20 PSI .5 lb. Increments	
QRP56-040	40 PSI 1 lb. Increments	
QRP56-060	60 PSI 1lb. Increments	
<b>Liquid Filled Gauges</b>		
QRP56-021	20 PSI .5 lb. Increments	
QRP56-041	40 PSI 1 lb. Increments	
QRP56-061	60 PSI 1 lb. Increments	
<b>Glow-In-The-Dark Gauges</b>		
QRP56-022	20 PSI .5 lb. Increments	
QRP56-042	40 PSI 1 lb. Increments	
QRP56-062	60 PSI 1 lb. Increments.	

## Deluxe Tire Durometer QRP56-155

Checks hardness of tire to determine condition. Includes carrying pouch.

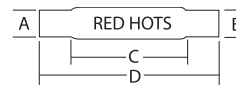


## Hawk Tire Tape

Tape's unique hawk tip securely grabs any surface, won't pull loose and measures to 10 feet.



Part No.	Description	Price
QRP56-110	Tire Tape	
QRP56-111	Tire Tape, Carded	



## Red Hots Your Choice -

Back pressure is decreased to increase flow and help boost power. Red finish only. Sold individually.



Part No.	Description	"A"	"B"	"C"	"D"
FLT50250	Slip-Fit Muffler	2"	2"	18"	24"
FLT50251	Slip-Fit Muffler	2-1/4"	2-1/4"	18"	24"
FLT50252	Slip-Fit Muffler	2-1/2"	2-1/2"	18"	24"



**FAST  
MOVERS**



## Replacement Filters and Intake Systems

Part No.	Description	Price
<b>Replacement Filters</b>		
KNE33-2118	'98-02 Camaro 3.8L, 5.7L	
KNE33-2434	'10-11 Camaro 3.6L, 6.2L	
KNE33-2305	'05-07 Corvette 6.0L	
KNE33-2129	'99-11 GM P/U, SUV 4.3L, 4.8L, 5.3L	
KNE33-2135	'99-11 GM P/U, SUV 6.0L, 6.2L, 6.6L (Panel Filter Only), 8.1L	
KNEE0781	'05-10 GM P/U 6.6L Round Filter	
KNE33-2334	'06-11 Impala 3.5L, 3.9L 5.3L	
KNE33-2295	'04-10 Charger, Challenger, Magnum, 300C 2.7L, 3.5L, 5.7L, 6.1L	
KNE33-2247	'02-11 Dodge P/U 3.7L, 4.7L, 5.7L	
KNEE0776	'03-09 Dodge 2500, 3500 5.9L	
KNE33-2364	'07-11 Jeep Wrangler 3.8L	
KNE33-2298	'05-10 Mustang 4.0L (2010 Only), 4.6L	
KNE33-2431	'10-11 Mustang 3.7L, 4.6L, 5.0L	
KNE33-2248	'99-03 Ford F250-550 7.3L	
KNE33-2287	'04-08 Ford F150 5.4L	
KNEE0785	'08-10 Ford F250-550 6.4L	
<b>Air Intake Systems</b>		
KNE63-3074	'10-11 Camaro 6.2L	
KNE57-3050	'05-07 GM P/U 1500 4.8L, 5.3L	
KNE63-3058	'07-08 GM P/U, SUV 4.8L, 5.3L, 6.0L, 6.2L	
KNE57-1542	'05-07 Charger, Magnum, 300C 5.7L, 6.1L	
KNE63-1114	'08-10 Charger, Challenger, 300C 5.7L, 6.1L	
KNE57-1533	'03-07 Dodge P/U 5.7L	
KNE57-1532	'03-07 Dodge 2500, 3500 5.9L	
KNE57-2565	'05-06 Mustang 4.6L	
KNE63-2565	'08-09 Mustang 4.6L	
KNE57-2530	'99-03 Ford P/U, SUV 7.3L	
KNE57-2546-1	'03-07 Ford P/U, SUV 6.0L	
KNE57-2556	'04-07 Ford F150 5.4L	



## Extreme Chrome Coil-Over Springs

AFCO's racing technology and suspension knowledge has resulted in a street coil-over spring that may be custom-tailored for the best possible ride quality. Guaranteed to remain within 2% of their original free height, AFCO springs are made of "HTX" wire.



Part No.	Rate In Lbs.	Price
<b>7" Springs</b>		
AFC27300-1CR	300	
AFC27350-1CR	350	
AFC27400-1CR	400	
AFC27450-1CR	450	
<b>8" Springs</b>		
AFC28300-1CR	300	
AFC28400-1CR	400	
AFC28450-1CR	450	
<b>10" Springs</b>		
AFC23200CR	200	
AFC23250CR	250	
AFC23300CR	300	
AFC23350CR	350	
<b>12" Springs</b>		
AFC22110CR	110	
AFC22125CR	125	
AFC22150CR	150	
<b>14" Springs</b>		
AFC24110CR	110	
AFC24125CR	125	



## Ultra 40 Race Spark Plug Wire Sets



Kevlar core is four times stronger than conventional Aramid fiber cores and wires have with just 40 ohms of resistance per foot. Available in universal or custom sets. Custom fit wire sets include Ultra 40 insulated wire sleeve.

Part No.	Description	Price
<b>Universal Wire Sets *</b>		
MOR73800	90° Universal Wire Set	
MOR73802	Universal, No Sleeve, 135 Deg. Plug/Socket And HEI Cap	
<b>Custom Fit Wire Sets</b>		
MOR27001	SBC Under Valve Covers Wire Set, 90° Plug, HEI, Front of Motor Routing	
MOR73602	SBC Over Valve Covers, 90° Plug, HEI	
MOR73607	SBC Under Headers, 90° Plug, HEI	
MOR73616	BBC 8.65mm, Sleeved, Over Valve Covers, Straight Plug/HEI Cap	
MOR73630	SB Ford 289-302, 8.65mm, Sleeved, 135 Deg. Plug/HEI Cap	

\* Universal wire sets do not include wire sleeve.



## SB Chevy Hydraulic Cam and Lifter Kits

Small block Chevy cam and lifter kits have 110° lobe separation and various lift and duration to choose from.

Part No.	Lift	Duration	Price
ELGCL-1069PK	.440"/.440"	266	
ELGCL-1065PK	.454"/.454"	272	
ELGCL-1785PK	.450"/.450"	274	
ELGCL-1784PK	.480"/.480"	284	

## Stock Appearing Nitro-Carbon Steel Rocker Arms



Great resistance to wear, fatigue and fracture in high stress areas. Long slot design is compatible with high valve lifts. SB Chevy rocker arms are sold in sets of 16 and include nuts and grooved balls.

Part No.	Description	Price
ELGRK-840NS	1.5 Ratio, 3/8" Stud, Long Slot	
ELGRK-840SPNS	1.6 Ratio, 3/8" Stud, Long Slot	





## Supercharging Systems For Ford Mustangs

Gear-driven superchargers can add over 100 horsepower, transforming the late model Mustang into a true "supercar". Polished superchargers, belts, pulleys, high flow fuel injectors and fuel pumps, and the DiabloSport controllers make up the systems which also include an air filter, mounting brackets and instructions. Optional high output systems include an integrated air-to-water charge cooler to further boost horsepower. All systems are emissions legal in all 50 states.



Part No.	Application	Stock HP/TQ	Vortech HP/TQ	Boost PSI	Price
<b>Standard Supercharging Systems</b>					
VOR4FU218-030SQ	'07-08 GT 4.6L 3V	300/320	420/385	8.5-9.5	
<b>High Output Supercharging Systems</b>					
VOR4FU218-028SQ	'05-06 GT 4.6L 3V	300/320	462/419	8.5-9.5	
VOR4FU218-040SQ	'07-08 GT 4.6L 3V	300/320	462/419	9.5-10.5	

## Supercharger System For Chevy Camaro

A complete system with V-3 Si-Trim self-lubricating supercharger can add up to 47% more horsepower at 6.6-7.5 PSI boost and at the stock redline. Available in satin or polished finishes. Fits 2010 Camaro.

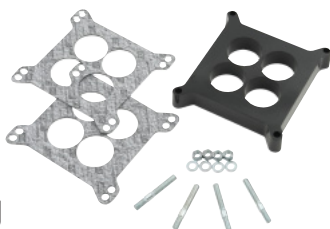


Part No.	Description	Price
VOR4GE218-010L	V-3 Si-Trim Complete System, Satin	
VOR4GE218-018L	V-3 Si-Trim Complete System, Polished	



## 4-Hole Phenolic Thermal Insulating Carburetor Spacer Kit MRG3404

Spacer insulates and reduces heat transfer to the carburetor for a cooler, denser air charge. Made of advanced phenolic thermoset plastic to withstand extreme heat. Spacer is 1" thick and packaged with studs, nuts and washers. Fits 4-hole standard Holley/Carter flanges.



## Vacuum Cap Assortment MRG3704

Durable, Buna-N rubber, vacuum cap assortment includes four each of 1/8", 3/16" and 1/4", and two each of 5/16" and 3/8" vacuum caps.



## Tire Screw Kit MRG4318

Prevent slicks from spinning on the rim when running low tire pressure. Kit includes 35 Grade 8, #14 x 3/4" hex head screws and drill bit.



## Hood And Deck Pinning Kit MRG1016

Secure hoods and give the car a competition look. Kit permits quick removal of hood or deck. Includes two chromed 7/16"-20 threaded safety pins, screw-on scuff plates and hardware. Overall pin length is 4" with 2-1/2" of threads.



## Chrome Plated Heater Hose Fitting MRG9743

Fitting is for 3/4" I.D. hose. Fitting is 1/2"NPT and measures 2-7/8" long.





**Trick Flow**



## SB Ford Twisted Wedge Street/Strip Cylinder Heads TRFTFS-51400010

An improved combustion chamber design rotates valves over the center of the cylinder bores for optimum valve angles, locations and chamber shape. As cast aluminum heads have 170cc intake ports and are fitted with 2.020" intake and 1.600" exhaust valves, intake valves do not require flycutting of pistons. Cylinder heads include increased rate valve springs and 10° valve locks for bracket racing applications with up to .600" Valve lift. Sold in pairs, completely assembled.

## SB Ford Twisted Wedge Race 225 Cylinder Heads TRFTFS-5241B003-C01

Made just for racing, Twisted Wedge® Race 225 heads include the same features as the Twisted Wedge® Race 206 heads, but are fully 5-axis CNC-ported to boost the intake runner volume to 225cc and exhaust runner volume to 100cc. This permits 341 cfm of flow to enter the CNC-machined combustion chambers and 271 cfm (@ 0.700 in. lift) to exit through the ported exhaust runners. Accepts 2.080" intake valves and 1.600" exhaust valves.



## BB Ford PowerPort 290 Cylinder Heads TRFTFS-53410001

Cylinder heads are designed for high performance Ford 429/460 street and street/strip applications, providing significant horsepower and torque gains over similar-style cylinder heads. The PowerPort® 290 heads feature Fast As Cast 290cc intake/130cc exhaust runners and 74cc combustion chambers. The exhaust ports are raised 0.270 in. from stock for better flow. Cylinder heads are assembled with 2.200 in. intake/1.760 in. exhaust stainless steel valves, valve springs, 7/16 in. studs, guideplates, retainers, and locks. The heads do not have provisions for EGR or other emissions equipment.



## High Performance Super Sucker Carburetor Spacers

Spacers increase throttle response, improve carb signal, and insulate the carburetor from the manifold. Available in aluminum or plastic (for drag racing only). For Holley 4412, 4150 and 4500 Dominator carburetors.

Part No.	Description	Price
<b>Aluminum Carburetor Spacers</b>		
HVHSS4150-1AL	4150 1" Tall Spacer For Open Plenum Manifolds	
<b>Lightweight Aluminum Carburetor Spacers</b>		
HVHSS4150-1ALW	4150 1" Tall Spacer For Open Plenum Manifolds	
<b>Drag Race Plastic Carburetor Spacers</b>		
HVHSS4150-1	4150 1" Tall Spacer For Open Plenum Manifolds	
HVHSS4500-1	4500 1" Tall Spacer, 2" Bore, For Open Plenum Manifolds	



## Black Overflow Catch Can JAZ600-025-01

Molded one-piece, one quart catch can has unique swivel elbow input and a lever handle petcock for draining. Easily mounted with two molded-in 1/4"-20 threaded inserts.

## SFI-Approved Black Roll Bar Padding JAZ690-003-01

Adhesive backed, 1/2" thick roll bar padding is sold in 3 ft. lengths, meets SFI 45.1 specifications, and is easily attached to roll bar tubing.



## Pro Stock Seats

Economical polyethylene seat offers excellent lumbar support. Weighs just 12 lbs. with cover. Built-in head rest allows 325° of vision. Seats are 32-3/4" high, 20-1/2" wide and have a 9-1/2" x 12-1/2" mounting surface with 5/16"-18 mounting inserts. All seats are compatible with 5-point harnesses. Seat covers sold separately.



Part No.	Description	Price
JAZ100-100-01	Pro Stock Seat only	
JAZ150-101-01	Black Vinyl Seat Cover	



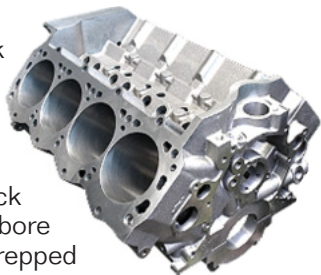
## SB Ford Windsor Jr. Cast Iron Cylinder Head WRD053030

High velocity and flow increase horsepower and torque. The Windsor Jr. with 180cc intake runners and 58cc combustion chambers is best for slightly modified engines. Sold individually as a bare head. 1.940"x1.600" valve sizes.



## SB Ford Man O' War Engine Block WRD087082

The ultimate replacement for Ford 351W block. Cast iron block has 9.500" deck height, priority main bearing oiling, four-bolt nodular splayed main caps, 351 Cleveland main bearing sizing and expanded water jackets. Block will accommodate up to a 4.125" bore and 4.250" stroke and must be prepped before assembly.



## SB Chevy S/R Torquer Cast Iron Cylinder Head WRD042660

S/R Torquer provides up to 30HP over stock heads and is a performance alternative to OEM castings or junkyard rebuilds. Heads are designed with extra-thick decks and walls for improved reliability as well as equipped with hardened steel exhaust seats to be compatible with unleaded gasoline. Head uses 2.020" intake valve and a 1.600" exhaust valve and have 170cc intake runners with 67cc combustion chamber volume. Sold individually as a bare head.



## SB Chevy Ultra-Pro Series Mechanical Roller Lifters CRN11570-16

"Ultra-Pro" series lifters are lighter, stronger and more reliable than conventional mechanical roller lifters. Constructed from premium 8620 alloy steel, fully CNC-machined lifters use a "four column" design to minimize weight, while maintaining necessary strength and rigidity. Lifters have been thoroughly proven using extensive Spintron testing. Lifters are .842" diameter and sold in sets of 16. Fits SB Chevy 262-400 V8. Standard pushrod seat.



## HI-6 Ignition System CRN6000-6440

HI-6 capacitive discharge system delivers up to 12 times the spark gap current of stock units and ensure complete combustion. Digital rev limiter is adjustable from 500-9,900 RPM in 100 RPM increments with no chips required. Sequential Rev Limiting Technology fires all cylinders equally at the rev limit, eliminating engine and drivetrain stress.



## BB Chevy "Z Cam" Hydraulic Roller Camshafts Your Choice -

Fits 396-454 big block Chevy. Cam only.



Part No.	RPM Range	Adv. Duration	Dur. @.050"	Valve Lift
CRN139011	2500-6000	288°/296°	226°/234°	.587"/.610"
CRN139021	3000-6500	296°/304°	234°/242°	.610"/.632"

## GM XR-1 Points Ignition Conversion Kit CRN750-1710

Points-to-electronic ignition conversion kit mounts inside the distributor, in the stock location. XR-1 picks up timing directly from the points cam, with no shutter wheel required and is only a two wire hook up. Includes a built-in rev limiter that is adjustable from 4,000 to 8,000 rpm.





## SB Chevy CNC Ported Edelbrock Victor Intake Manifold WLS128250

A cost-effective, competition prepared manifold with CNC-blended, port-matched runners, recontoured dividers and plenum areas for maximum out-of-the-box performance. Manifold is port matched to Fel-Pro 1206 and 1266 gaskets.



## Compound Angle Tapered Carb Spacer WLS003150

Similar to other Wilson spacers, mounting surface has compound angles to position the carburetor downward to the front and driver's side. Spacer is 2" tall and keeps 4150 series carburetors level on dirt late models where suspension is set to keep driver side front corner as high as possible for best traction. With spacer, jets stay submerged, preventing fuel starvation and power loss. Fits Holley 4150 4bbl applications.



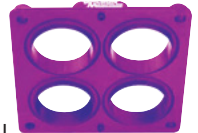
## 1" Tall 2300 2BBL Carb Adapter WLS044111

Tapered CNC-machined aluminum adapter adapts Holley 2300 2BBL carb to manifolds with standard square flange. Tapered design allows efficient transition, preventing fuel mixture problems and improving air flow. 1" Tall.



## 4500 Dominator Shear Plate WLS525200

Engineered for use on sheet metal intake manifolds, the 2" thick, purple anodized aluminum plate has a unique 7° taper in the bore to promote fuel atomization, reduce fuel puddling, improve the carb signal and flatten the fuel curve.



## High Flow Throttle Bodies

Single bore throttle body is machined from aluminum billet and dramatically increases air flow. Brass throttle blades reduce vibration and thermal expansion. Choose from 90mm (3.750" O.D.) or 105mm (4.250" O.D.) versions.



Part No.	Description	Price
WLS471105	105mm, 1520CFM, 4.250" O.D.	
WLS471090	90mm, 1170 CFM, 3.750" O.D.	



## SB Chevy 23° Cast Iron Cylinder Head

Features include "as cast" chambers and ports, unique multi-angled radiused intake and exhaust seats, bronze wall valve guides and accepts standard or late model, centerbolt valve covers and standard screw-in studs and rocker arms. Available with 200 or 220cc intake runner volumes, and sold individually as bare casting. Angled plugs.



Part No.	Intake Runner	Comb. Chamber	Intake Valve	Exhaust Valve	Price
RHS12334	200cc	50cc	2.020"	1.600"	
RHS12336	220cc	50cc	2.020"	1.600"	

## SB Chevy Pro Torker and Vortec Cast Iron Stock Replacement Cylinder Heads Your Choice –

Replacement, generic heads can yield up to 30 horsepower more than standard small block heads. Heads feature Vortec "D" style combustion chambers, dual pattern rocker cover threads, 170cc intake runners and 23° valve angle. Sold individually as bare castings. Straight plug.



Part No.	Description	Comb. Chamber	Intake Valve	Exhaust Valve
RHS12403	Pro-Torker	67cc	2.020"	1.600"
RHS12407	Vortec	64cc	1.940"	1.500"





## Small Block Chevy Oval Track Racing Camshafts

Part No.	Description	Grind Lobe Center	Duration @ .050"		Gross Lift 1.5/1.5		Price
			Int.	Exh.	Int.	Exh.	
CRO00254	Hydraulic Stock Lift Rule - Lighter Car, 3/8 Mi. Track, Good Low End, RPM Power Range: 350-372 C.I. 3250-6000, 383-400 C.I., 3000-5750, Redline 6500 RPM+	228H234/106°	228°	234°	.419"	.417"	
CRO00351	Solid Lifter Compu-Pro/NASCAR Sportsman, RPM Power Range: 3000-7000, Redline 7500+	288FDP/105°	254°	262°	.525"	.546"	

## Severe Duty Roller Lifters

Ideal for high RPM and high cylinder pressure, lightweight lifters have billet alloy bodies, and heavy duty blades which are raised for use with late model blocks. "HIPPO" (Hi-Pressure Pin Oiler) lifters have a .024" orifice to direct oil to the needle bearings, improving durability. Choose standard or offset designs. Sets of 16.



Part No.	Description	Price
CRO66291-16	BB Chevy Mark V 454, .842" Dia.	
CRO66291H-16	BB Chevy Mark V 454, .842" Dia., "HIPPO"	
CRO66292-16	SB Chevy 262-400, Offset Int., .842" Dia.	
CRO66292H-16	SB Chevy 262-400, Offset Int., .842" Dia., "HIPPO"	

## Billet Performance 7° Valve Stem Keepers CRO86107X2-16

Machined from chrome moly and heat treated for maximum strength. Keepers fit 11/32" valve stems. -.050" Installed Height. Sold in sets of 16 pair.



## Ford 2000/2300cc Cam Followers CRO66993-8

Followers fit all Ford 2000/2300cc 4-cylinder engines and maximize valvetrain performance. Sold in sets of eight.



## Wide 5 HS Wheels

A very strong wheel originally designed for East Coast Modifieds, HS Wheels are made from .190" thick, 5052-H32 aluminum and fully polished to a mirror-like finish. Cold forged rim halves are lighter in the barrel, thicker at the bead seat and bolt flange where strength is needed most. Wheels have "Double-Wall" rim edges, 10 upset forged lug holes and no countersinks or steel inserts.



Part No.	Description	Price
WEL571-5425	Outer Bead-Loc 15"x14", 5" Rear Spacing	
WEL571-5455	Outer Bead-Loc Includes Mud Cover, 15"x14", 5" Rear Spacing	
WEL571-5415	Non-Bead-Loc 15"x14", 5" Rear Spacing	



## Q-Series Carburetors

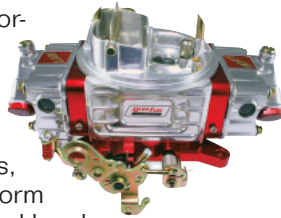
Circle track carburetors provide exceptional performance throughout the entire RPM range. All new carburetors have die cast, high flow main bodies, billet metering blocks and throttle bodies, die cast aluminum float bowls, and adjustable secondary pump cam brackets on 4bbl. Gasoline only.



Part No.	Description	Price
QFTQ-500-CT	Gasoline 500 CFM 2BBL	
QFTQ-750-CT	Gasoline 750 CFM 4BBL, Mech. Secondaries	

## Super Street Carburetors

Specifically designed for high performance street or street/strip operation, Super Street carburetors have been developed using years of successful race track experience. Carbs combine billet metering blocks, billet throttle body, all aluminum Proform main body and dual inlet aluminum fuel bowls. Changeable air bleeds, tuneable secondary opening rate and power valve channel restrictions allow exceptional tuneability.



Part No.	Description	Price
QFTSS-650	650 CFM Mechanical Secondary Carburetor	
QFTSS-750	750 CFM Mechanical Secondary Carburetor	

## Hot Rod Series Carburetors

Every carb is constructed with light-weight polished cast-aluminum parts and features: dual metering blocks, premium non-stick gaskets and universal throttle levers. The top quality needles and seats, screw-in air bleeds and sight windows make for easy tuning. Every Hot Rod series carb is hand assembled and engine tested. Available with either vacuum or mechanical secondaries. The vacuum secondary housing has an adjustment screw to easily tune the opening rate of the secondaries while the mechanical secondary links can be changed from soft progressive to medium progressive or 1:1.



Part No.	Description	Price
QFTHR-650	650CFM Carburetor Mechanical Secondaries	
QFTHR-680-VS	680CFM Carburetor Vacuum Secondaries	



## 3-Way Adjustable Shocks Your Choice -

Under sudden acceleration, the shocks/struts allow the chassis to separate quickly, transferring weight and traction to the rear tires. They also provide resistance during compression, extending the duration of chassis separation for maximum weight transfer. Front shocks are adjustable in ratios of 90/10, 80/20, and 60/40; rears are adjustable in ratios of 70/30, 60/40, and 50/50. For competition use only.



	Model	Front	Rear
<b>Buick</b>	Apollo, Skylark, '74-80	COE2600	-
	Apollo, Skylark, Exc. H.D. '73	COE2600	COE2720
	Apollo, Skylark, With H.D. '73	COE2600	-
	Skylark, '68-79	COE2600	COE2720
	Regal '73-87	COE2600	COE2720
<b>Chevrolet</b>	Camaro '82-99	-	COE2700
	Camaro '67-69	COE2600	COE2700
	Chevelle, Malibu, El Camino '68-83	COE2600	COE2720
	Chevy II, Nova '74-79	COE2600	-
	Chevy II, Nova '68-72 Rear Multi-Leaf	COE2600	COE2720
	Monte Carlo '70-88	COE2600	COE2720
	S-10 And Blazer 2 WD '82-96	COE2600	COE2720

## Two Degree Wedge Plates COE7025

Allows adjustment of pinion or traction bar angle on cars or trucks fitted with leaf springs. Durable aluminum plates feature integral ribs to allow stacking. Sold in pairs.



## Steel Mid-Mount Plate, Chevy COE4031

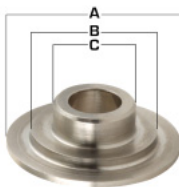
.090" thick plate works with a front motor plate to effectively eliminate engine twisting and securely mount engine and transmission.





## 10° Titanium Valve Spring Retainers Your Choice -

Extremely durable and machined to exacting tolerances, Trick Titanium retainers can make all the competitive difference!



Part No.	Valve Spring	Dimensions		
		A	B	C
TRITT731B-16	1.500"-1.550" Double	1.437"	1.100"	.800"
TRITT732B-16	1.500"-1.550" Double	1.500"	1.110"	.710"
TRITT738B-16	1.500"-1.550" Double	1.500"	1.120"	.730"
TRITT739B-16	1.625" Triple	1.500"	1.180"	.870"
TRITT23648B-16	1.580"-1.610" Double +.100"	1.500"	1.150"	.825"



## Ford Cam Bearings

Use Standard Performance cam bearing sets with hydraulic and solid lifter cams. High Performance set is ideal for roller cams with higher lift and spring loads. Some bearings listed are available in .010", .020", .030" and .040" oversizes. Specify size when ordering.



Part No.	Application	Price
<b>Standard Performance Sets</b>		
DURF-34	Ford 4-Cylinder	
DURF-26	Ford, '70-82 351C, 351M-400	
DURF-30	BB Ford, '68-98 429-460	
DURF-33	BB Ford, "FE" '58-76 352-428 exc. '66-68 427	
DURF-24	BB Ford, '66-68 427 "FE"	
<b>High Performance Set</b>		
DURFP-18	SB Ford, '62-99 221-351W	

## Engine Hardware Finishing Kits

Standard kits include cylinder head, timing cover and oil pump dowels, cam bolts, and three Woodruff keys for the crankshaft. Items vary from engine to engine, kits listed include cam eccentric.



Part No.	Description	Price
DURFKF-1	SB Ford 289, 302, 351W, Late Model Carbureted	
DURFKF-3	BB Ford 460, Carbureted	



## High Performance Oil Pumps by Schumanns

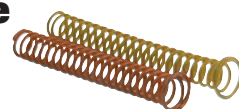
Iron alloy pumps are blueprinted with full flow shaft oiling and 80% less porosity for a yield strength of 70,000 PSI. Pumps are blueprinted and precisely machined with full flow shaft oiling, exact mesh gears and anti-aeration bleed-off for exceptional high RPM lubrication. Choose "O.E. Plus", or the "Sportsman SSR" series which includes 50-55, 65-70 and 80-90 PSI pressure relief springs.



Part No.	Description	Price
<b>OE Plus SB Chevy 262-400 Pumps</b>		
AFM20315	Standard Volume	
AFM20316	High Volume	
<b>Sportsman SSR SB Chevy 262-400 Pumps</b>		
AFM20317	Standard Volume	
AFM20318	High Volume	

## SB Chevy Oil Pressure Relief Springs Your Choice -

Part No.	Description
AFM20313	65-70 PSI, Orange
AFM20314	80-90 PSI, Yellow



## Chevy HEI Vacuum Advance Distributor AFM20210

Chevy V8 distributor has a cast aluminum housing, 4-pin module, vacuum advance and a mechanical advance curve tailored to the daily driver. Black cap and rotor included.



## GM HEI High Performance In-Cap Coil AFM20211

The perfect complement to the Chevy HEI distributor. Coil cover and hardware are included.







## Hyfire VI-A Digital CD Ignition MAL6852M

Capacitive discharge ignition improves acceleration and throttle response with a lower power draw. Lightweight, easy to install ignition is compatible with points, electronic or magnetic crank trigger ignitions.

## Hyfire VI-AL Digital CD Ignition MAL6853M

Multi-spark ignition uses micro-processor controlled circuitry for increased performance. Low power draw capacitive ignition features a built-in digital rev limiter (4,500 to 12,000 RPM without plug-in modules).



## Hyfire VI Multi-Strike Digital CD Ignition MAL685

Microprocessor controlled capacitive discharge ignition is ideal for nitrous-assisted, supercharged and turbo-charged engines. Ignition includes a two-stage rev limiter, automatic start retard, built-in RPM window switch, and boost proportional retard capability.



## Chevy Unilite Breakerless Electronic Distributor MAL3748201

High performance breakerless electronic distributor includes self-contained optical pickup and module for years of trouble-free, reliable operation. The 37-Series distributor has a mechanical advance mechanism. Distributor is compatible with most popular ignition controls and include cap and rotor. Fits Chevrolet V8.

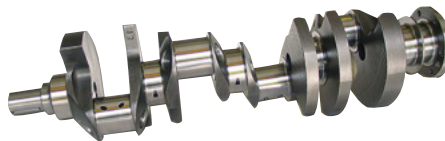


## Chevy HEI Distributor and Coil MAL8548201C

Completely new, race-prepped distributor features a cast aluminum, CNC-machined housing, high performance mechanical advance, adjustable vacuum advance and red cap and rotor with brass inserts. Fits Chevrolet V8.



## Unilite Module, All 37, 38, 47 Series Distributors MAL605



## SB Chevy Magnum 4340 Forged Steel Crankshafts

Lightweight, yet durable crankshafts are manufactured from ultra pure AISI 4340 forged steel. SB Chevy crankshafts feature gun drilled mains and fully profiled counterweights, and have undergone exclusive Ultra-Case heat treatment.

Part No.	Stroke	Mains	Pin	Price
CALSAJ11A-MG	3.750"	2.449"	2.100"	
CALSAM21A-MG	3.875"	2.649"	2.100"	



## SB Chevy Compstar H-Beam Connecting Rods CALCSA6000DS2A2AH

Forged 4340 H-beam steel rods are put through a lengthy stress-relief process and polishing of threads. Pin bushings are chamfered and honed, have chamfered parting line edges and bearing locating tab slots are deburred. ARP 2000 bolts and stroker clearances are standard with Compstar rods. 6.000" rods are for use with a floating wrist pin, have 2.100" rod journal, 2.225" big end bore, .927" pin end.



## Fuel Pump Push Rod COM4607

Required when a roller cam has been installed and has lightweight bronze tip. Fits small and big block Chevy.

## Engine Break-In Oil Additive COM159

A special blend of extreme pressure break-in additives deliver added protection during the break-in process for all engine components, including the camshaft and lifters. Break-in Oil Additive is compatible with any petroleum, synthetic or blended motor oil and it extends the durability of internal engine components, protecting against premature camshaft, lifter and valve train failure. Pour in a bottle for initial break-in, run the engine for approximately 1,000 miles, drain the system thoroughly and then refill with clean oil and another bottle of Engine Break-In Oil Additive at each oil change. Sold in 12 oz. bottle.



## 10° Super Lock Steel Retainers COM741-16

Steel Retainers are machined from 4140 chrome moly and finished in black oxide. Retainers are 10° for superior strength and maximum stability. Fits all valve stem size and 1.500"-1.550" spring diameters. Sold in sets of 16.



## 11/32" Super Locks with Lash Cap Recess COM611-16

Super Locks are machined with a 10° angle for better distribution of loads over the retainer, reducing chance of "pull through". Fits any Comp 10° retainer. Sold in sets of 16 pair.



## High Performance Dual Valve Springs COM924-16



Part No.	Description	O.D.	I.D.	Coil Bind Ht.
COM924-16	2 Spring (920, 974) w/ Damper	1.509"	.697"	1.175"

## LS1/LS6 Street/Strip Valve Springs COM26918-16



Single ovate valve springs are offered for late model GM LS1, LS6. Springs are ideal for street/strip engines. Sold in sets of 16.

Part No.	O.D.	I.D.	Coil Bind Ht.
COM26918-16	1.290"	.885"	1.085"

## SB Chevy Endure-X Solid Roller Lifters COM818-16

Upgraded for even greater durability, lifters' EDM, oil injection design provides a constant flow of oil to the bearing assembly, preventing oil starvation. Removable, captured link bars, precisely sorted bearings and wear resistant, tool steel axles are also featured. Engineered to operate efficiently at low engine speeds. Straight up style .842" diameter lifters are for 1955-86 SB Chevy. Sold in sets of 16.



## SB Chevy Magnum Pushrods COM7372-16

One-piece, .080" wall chrome moly steel pushrods are engineered to stand up to the high spring pressures and stresses of oval track racing. 5/16" push rods are .080" thick, stock 7.800" length and hardened. Sold in sets of 16.





## High Impedance Performance Fuel Injectors

High impedance injectors will function properly with the vehicle's ECU, producing a wide angle, conical spray pattern for improved fuel atomization and added horsepower. Fits popular GM and Ford applications. Sold in sets of eight.



Part No.	Description	Price
ACL150824	24lb Fuel Injectors	
ACL150830	30lb Fuel Injectors	

Application	Stock Replacement	Performance Level/Fuel Injector Flow Rate			
		Level 1	Level 2	Level 3	Level 4
Ford					
'86-95 Mustang 5.0L	—	—	—	ACL150824	—
'93-95 Mustang Cobra 5.0L	—	ACL150830	—	—	—
'96-98 Mustang 4.6L SOHC	—	—	ACL150824	—	ACL150830
'96-98 Mustang 4.6L DOHC	—	ACL150830	—	—	—
General Motors					
'87-88 F-Body 5.7L TPI	ACL150824	—	ACL150830	—	—
'89-92 F-Body 5.7L TPI	—	—	ACL150824	—	ACL150830
'93 F-Body 5.7 LT1	ACL150824	—	ACL150830	—	—
'94-97 F-Body 5.7L LT1	—	ACL150830	—	—	—
'85-88 Corvette 5.7L TPI	ACL150824	—	ACL150830	—	—
'89-91 Corvette 5.7L TPI	—	—	ACL150824	—	ACL150830
'92-93 Corvette 5.7L LT1	ACL150824	—	ACL150830	—	—
'94-96 Corvette 5.7L LT1	—	ACL150830	—	—	—

## Universal Super Stock Spark Plug Wire Sets Your Choice –

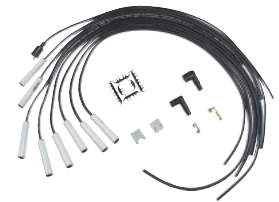
Super Stock 8mm silicone jacketed wire sets withstand 450 degree temperatures and deliver maximum spark for street applications. Plug ends are factory terminated, but distributor ends must be attached at time of installation. Standard and HEI type boots and terminals are included.



Part No.	Description
<b>90 Degree Boots</b>	
ACL4041	Yellow Wires/Orange Plug Boots
ACL4041B	Blue Wires/Blue Plug Boots
ACL4041K	Black Wires/Black Plug Boots
ACL4041R	Red Wires/Red Plug Boots

## Extreme 9000 Ceramic Plug Wire Sets Your Choice –

Capable of withstanding 600 degrees, Extreme 9000 wire sets use double silicone jacket with a 500 ohms per foot Ferro-Spiral core to provide excellent energy and RFI/EMI suppression. The ceramic boots can withstand up to 2,000 degrees and the cut-to-fit design offers fitment for every application.



Part No.	Description
ACL9000C	Universal Ceramic Wire Kit, Straight Boots
ACL9001C	Universal Ceramic Wire Kit, 90 Degree Boots
ACL9002C	Universal Ceramic Wire Kit, 135 Degree Boots



## Cast Steel Crankshafts

Reliable, affordable cast steel crankshafts are inspected for dimensional accuracy. Small block and big block Chevy; both for two-piece rear main seal.

Part No.	Description	Price
EAG103503750571	SB Chevy 383, Int. Balance, 3.750" Stroke (5.700" Min. Rod Length)	
EAG104544000	BB Chevy 454-502, Ext. Balance, 4.000" Stroke (6.135" Min. Rod Length)	

## "SIR" I-Beam Connecting Rods

Economical connecting rods offer 50% more strength. Forged from 5140 quality steel and well suited for Pro Street or street/strip. Sold in weight matched sets of eight. Bushed pin.



Part No.	Description	Price
EAGSIR6000BBLW	SB Chevy Lightweight Conn. Rods, 6.000" Length, 590 Grams	
EAGSIR6135B	BB Chevy, I-Beam Connecting Rods, 6.135" Length, 830 Grams	





## SB Chevy SFI-Approved Flexplates Your Choice -

Extra thick small block Chevy flexplates have double welded ring gears for added strength and are gold anodized for corrosion resistance. Plates meet SFI 29.1 specifications and bear the proper SFI sticker for NHRA/IHRA tech inspection. 153-tooth.



Part No.	Description
SCAFP-305-SFI	Internal Balance
SCAFP-350L-153-SFI	External Balance, 1-Pc. Rear Seal

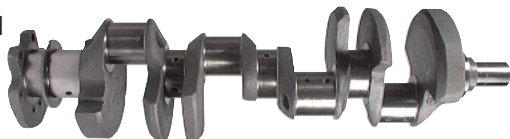
## SB Chevy 4340 Forged H-Beam Connecting Rods SCA2-350-6000-2100

Profiled standard weight H-beam connecting rods are compatible with many popular stroker engines and the dowelled caps provide a superb fit. Rods are bushed and fitted with ARP bolts. Sold in balanced sets of eight. 6.000" length, 2.100" journal and .940" pin.



## SB Chevy 4340 Forged Steel Crankshaft SCA4-350-3750-6000

Cranks are nitride hardened and straightened, with large fillet radius on all journals for increased lubrication. All rod journals have lightening holes. Each crank has straight shot, back-drilled oiling for maximum efficiency. Cranks are knife-edged and profiled for weight reduction and have pendulum undercut counterweights for additional weight savings. All cranks are micropolished and inspected. 3.750" stroke, 6.000" rod length and 2.100" rod journal.



Triple X  
Pg. 8,34,35



TXRSCSU0002BLK

## Sprint Jacobs Ladder

13-5/8" Jacobs Ladder includes standard straps or no straps (nuts and bolts not included). Plated and jig built for quality and exact fit. Offered in polished or black finishes.

Part No.	Description	Price
<b>Polished</b>		
TXRSCSU0002	Polished, 13-5/8 Jacobs Ladder With No Straps	
TXRSCSU0004	Polished, 13-5/8" Jacobs Ladder With Std. Straps	
TXRSCSU0006	Polished, 14" Jacobs Ladder With No Straps	
<b>Black</b>		
TXRSCSU0002BLK	Black, 13-5/8 Jacobs Ladder With No Straps	
TXRSCSU0004BLK	Black, 13-5/8" Jacobs Ladder With Std. Straps	
TXRSCSU0006BLK	Black, 14" Jacobs Ladder With No Straps	



TXRSCTW0020



TXRSCTW0022



TXRSCTW0026

TXRSCTW0025

## Sprint Nose Wing Components

Part No.	Description	Price
TXRSCTW0020*	Nose Wing Aero Front Post To Work With TXRSCCTW0022 Clamps	
TXRSCTW0022*	Nose Wing Front Post Clamp, Chrome Plated Steel	
TXRSCTW0025	Nose Wing Front Post, Plated Steel, 12-1/4" Length, Mounts From Chassis Spud To Nose Wing Side Boards	
TXRSCTW0026	Nose Wing Front Post, Plated Steel, 11-1/2" Length, Mounts From Chassis Spud To Nose Wing Side Boards	

\* Should Be Used Together

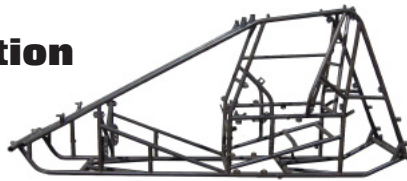




Triple X  
Pg. 8,34,35

## Sprint Revolution Chassis

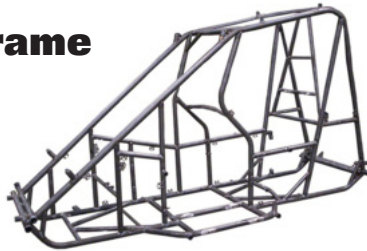
A race proven winner, the Revolution is an 87/40 raised rail chassis constructed from lightweight, durable 100% 4130 chrome moly tubing. Bare chassis is standard with left side safety/sissy bar, drive hoop, throttle stand, and wing spud.



Part No.	Description	Price
TXRSCCH100087SH	Bare Chassis, Standard Big Cage	
TXRSCCH1000872H	Bare Chassis, 2" Taller Big Cage	

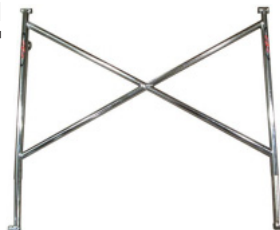
## Mini Sprint Chassis Bare Frame TXR600CH1000

Same design as the most popular chassis on the market today. Exact pickup points, motor plate location, torsion tube location, etc.



## Sprint Top Wing Tree TXRSCTW0012BLK

Top wing tree is made from plated 4130 chrome moly steel. Tree has 1" adjustment holes with a total of 6" of adjustment. "X" design for lateral and horizontal strength. Sold individually, adjuster pins not included. Black finish only.



## Mini Sprint Complete Front End TXR600FE9023



## Mini Sprint Complete Exhaust System TXR600EG0527



## Mini Sprint Aluminum Torsion Stop TXR600SU0170



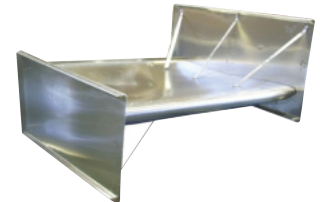
## 600 Mini Sprint Complete Rod Kit with Aluminum Tie Rods TXR600SU0263P



## Mini Sprint Complete Rear Axle Assembly TXR600SU9000



## Mini Sprint Top Wings



Part No.	Description	Price
TXR600TW0014	Top Wing 38" X 38" ASCS2	
TXR600TW0016	Top Wing 48" X 40" Multi Style	

## Sprint Car Kick Panels

Gel-coated fiberglass components are lightweight and strong. Available in black or white.



TXRSCBW0031BLK

Part No.	Description	Price
<b>White</b>		
TXRSCBW0026	White, Body Saver, Quick Fastener Bracket Protects Body Work	
TXRSCBW0031	White, Upper Right Panel (Horizontal Split Design)	
TXRSCBW0033	White, Upper Left Panel (Horizontal Split Design)	
<b>Black</b>		
TXRSCBW0031BLK	Black, Upper Right Panel (Horizontal Split Design)	
TXRSCBW0033BLK	Black, Upper Left Panel (Horizontal Split Design)	

## Top Wing Manual Slider TXRSCTW0018

Plated top wing manual slider (adjuster) is made of 4130 Chrome Moly and has 1/2" adjustment holes totaling 8" of available adjustment. Pins not included.





Allstar  
Pg. 3-5, 36

## Mesh Window Net Non-SFI ALL10298

Polyester net mounts with ALL10218 or ALL10219 installation kits. 22" x 18" rectangular black.



## Triple Pass Radiators

Radiators have standard 1-3/4" outlet and a universal inlet that accepts 1-1/2" standard hose, -16 or -20AN fittings (sold separately).



Part No.	Description	Price
ALL30045	19" x 24"	
ALL30046	19" x 26"	
ALL30047	19" x 28"	
ALL30048	19" x 31"	

## Inlet Fittings

Part No.	Description	Price
ALL30038	1-1/2" Standard Hose	
ALL30039	-16AN	
ALL30040	-20AN	



## 6 Qt. Claimer Oil Pans And Pick-Up

Small block Chevy pans are 7" deep.



Part No.	Description	Price
ALL26132	L.H. (Driver's Side) Dipstick	
ALL26133	R.H. (Passenger's Side) Dipstick	

## Aluminum 5x5 Front Hub Kit ALL68760

Kit for 8-bolt rotor includes aluminum front hub, bearings, races, spindle nut, seal, studs and lug nuts.



While  
Supplies  
Last

## Brake Bias Adjuster ALL42076

Adjuster with reference pointer includes a five foot cable that can be cut to any length for a custom fit and has 3/8"-24 threads for most standard pedal assemblies.



## Sprint Wash Plug Set ALL26036

Aluminum 4-piece set with O-rings for water tight seal. Plug diameter 2.90".



## Headlight Decals ALL23050

Glow-in-the-dark. 16.25" long x 5.5" tall.



## Winged Head Self-Ejecting Buttons ALL19046

Steel 5/16" buttons x .400" long. 10-pack.



## Winged Head Buttons ALL19236

Steel 7/16" buttons x .400" long. 10-pack.



## 14mm Internal Thread Chaser ALL96434

Perfect for repair of damaged spark plug threads without removing cylinder head.



## Mud-X Concentrate ALL78230

Prevents mud, dirt, oil, rubber and exhaust residue from sticking to body panels. One quart container.



## Mud-X Cleaner ALL78232

Cleans and shines plastic, polycarbonate, chrome, fiberglass, paint, vinyl and leather. Leaves an invisible coating that protects surfaces. 14 oz. aerosol can.



## TH-350/400 Torque Converter ALL26908

12" converter with 2000-2200 stall speed is ideal for mild performance applications including moderate drag racing, factory or street stocks. Fits GM TH-350 or TH-400 transmissions.

